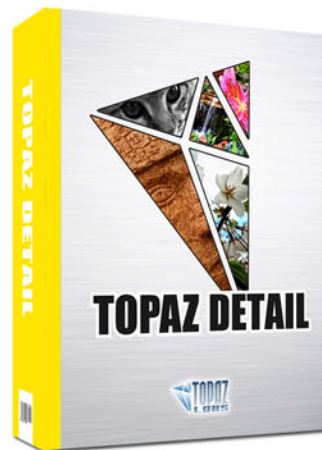




Topaz Detail V2

User Manual



The most controllable detail enhancement tool available to selectively control three levels of detail and sharpening within images with absolutely no leftover artifacts or halos.



I. Installation

- A. How to Install.....3
- B. Entering Your Key.....3
- C. Host-Specific Installation.....3
 - 1. Paint Shop Pro4
 - 2. Photo Impact.....5
 - 3. Irfanview.....6

II. Introduction

- A. Topaz Detail.....7
 - 1. Primary Functions.....7
- B. How Detail Works.....8
- C. New Detail Features.....10

III. Work Area

- A. Interface.....11
- B. Preview.....15
- C. Presets.....17
 - 1. Applying Presets.....17
 - 2. Adding Presets.....17
 - 3. Deleting Presets.....18
 - 4. Importing Presets.....19
 - 5. Exporting Presets.....19
 - 6. Sharing Presets.....19
- D. Tools.....20
- E. Menu.....21
 - 1. Enter Key.....21
 - 2. What's This?.....21
 - 3. User Guide.....21
 - 4. Tech Support.....21
 - 5. Product Info.....21
 - 6. Detail Gallery.....21
 - 7. About.....21

IV. Settings & Parameters

- A. Pre-Processing.....22
 - 1. What is it?.....22
 - 2. Why is it necessary?.....22
 - 3. How long does it take?.....22
 - 4. Do I have to pre-process?.....22

- B. Detail.....23
 - 1. Small Details.....23
 - 2. Small Boost.....23
 - 3. Medium Details.....23
 - 4. Medium Boost.....23
 - 5. Large Details.....23
 - 6. Large Boost.....23
- C. Tone.....24
 - 1. Red Tone.....24
 - 2. Green Tone.....24
 - 3. Blue Tone.....24
 - 4. Brightness.....24
 - 5. Contrast.....24
 - 6. Shadows.....24
 - 7. Highlights.....24
- D. Deblur.....25
 - 1. Strength.....25
 - 2. Radius.....25
- E. Color.....25
 - 1. Saturation.....25
 - 2. Saturation Boost.....25
 - 3. Hue.....25

VI. Work Flow

- A. Sample Project #1.....26
- B. Sample Project #2.....31

VII. Additional Resources

- A. Glossary.....36
- B. FAQ's.....38
- C. Shortcut Keys.....40
- D. Connect.....41
- E. Company Info.....42

Topaz Detail is a Photoshop plug-in, which means it won't run by itself and requires a compatible host program.

To Install

1. Close Photoshop or other image editing program if you are using it.
2. Open the Topaz Detail zip file, double-click on the Topaz Detail installer, and then follow the on-screen instructions.



Mac Dmg



Windows Zip

3. Your Topaz plug-ins will automatically be installed in your Photoshop plug-ins folder.
4. After the installation, you will need to enter your license or trial key.

Important for Mac Users:

After installation, Topaz Detail will be installed in the following folder: “ HD -> Library -> Application Support -> Topaz Labs -> Detail 2”.

If your Photoshop is installed in a customized location, you will need to manually create a shortcut (alias) link inside folder “<Photoshop install folder> -> Plug-ins” that links to “ HD -> Library -> Application Support -> Topaz Labs -> Detail 2 -> Plug-ins”.

Entering Your Key

Entering your trial key allows you to save your projects and print them during your evaluation period. Entering your license key allows you do the same, except without any time limitations.

1. Start by opening up an image in Photoshop.
2. Go to Filters -> Topaz Labs -> Detail 2 -> Menu -> Enter key.
3. You can then copy and paste or type your key in.

Important: To install the product on a second computer, you will need to download Topaz Detail and then enter your same license key.

Host-Specific Installation

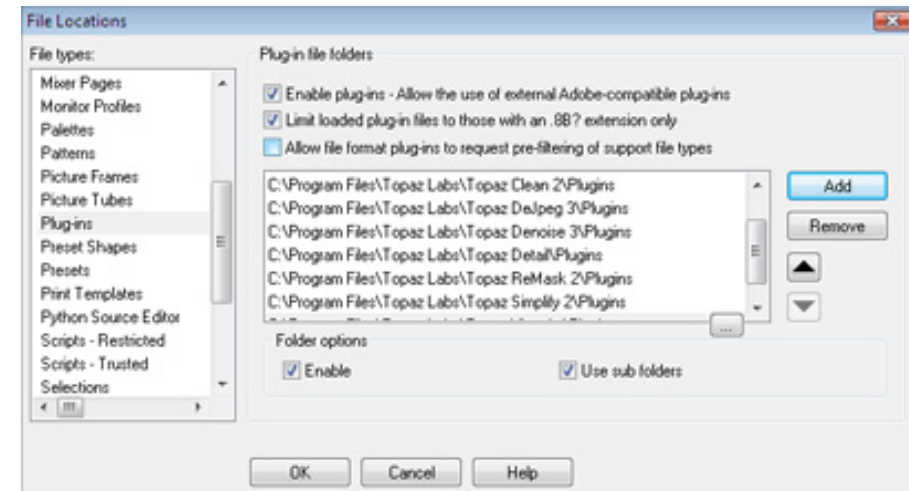
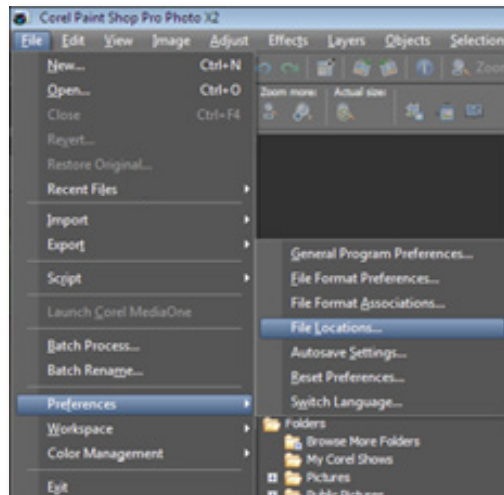
Topaz Detail is also compatible with Lightroom, Aperture and iPhoto. To use Detail in any of these programs you will need to download and install the free Topaz Fusion Express compatibility add on. You can get it online at: www.topazlabs.com/downloads

In Windows, Topaz Detail is supported by most host applications that support Photoshop plug-ins. This includes Paint Shop Pro, Photo Impact, Painter, and Irfanview, although there are additional host programs that may also support Topaz Detail.

To install Detail in either Paint Shop Pro, Photo Impact, or Irfanview first download Topaz Detail to the default location. Then, to configure it into each program, follow the host-specific instructions on the next page.

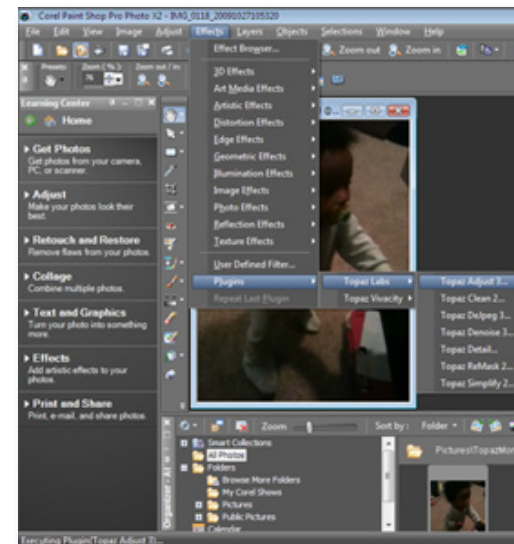
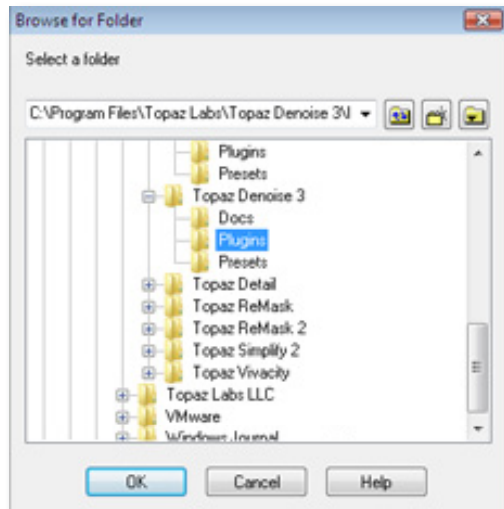
How to install Topaz Detail in Paintshop Pro

1. First launch PaintShop Pro / Photo Impact.
2. Go to Menu file -> Preferences -> File Locations. Select "Plug-ins" from the "File Types" list and click "Add".



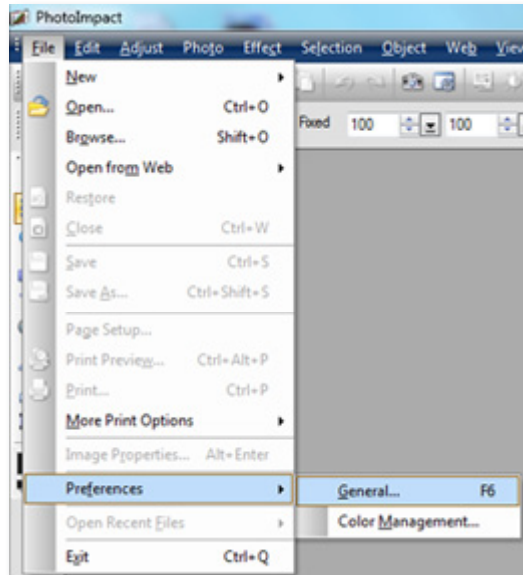
3. Choose C:\Program Files\Topaz Labs\Topaz Detail 2 plug-ins and click "OK".

4. Topaz Detail 2 is now available to use. Simply go to Effects -> Plug-ins and select "Topaz Detail 2".

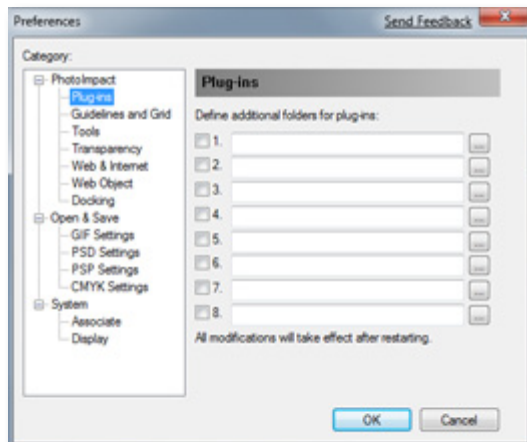


How to install Topaz Detail in Photo Impact

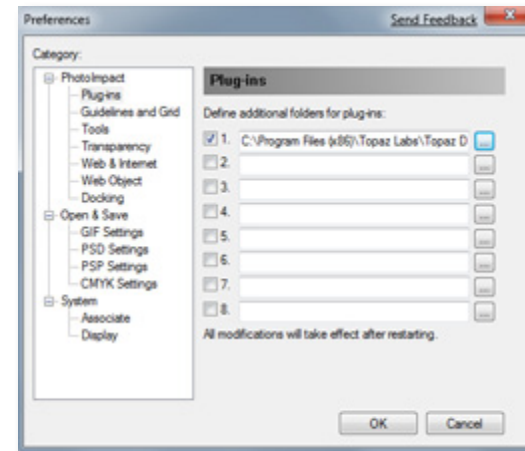
1. First launch Photo Impact.
2. Go to File -> Preferences -> General or use shortcut key F6.



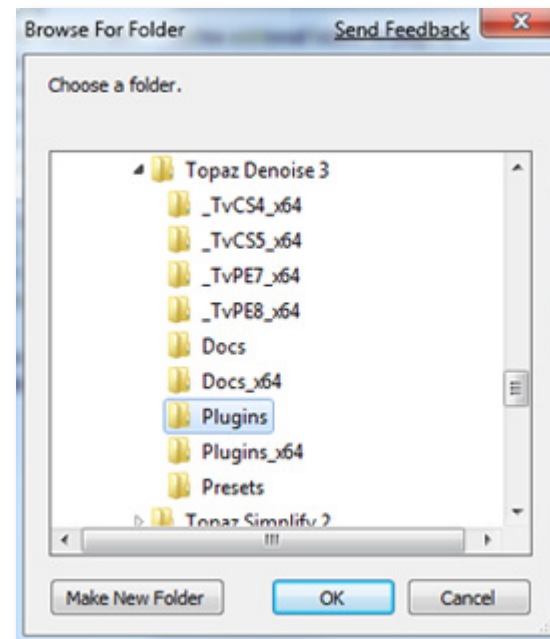
3. Select Plug-ins from the Categories list.



Then click on the ... button and browse to find the Detail plug-in folder located in: C:\Program Files\Topaz Labs\Topaz Detail 2 plug-ins and then click "OK".



4. Restart Photo Impact. Go to Menu -> Effect to access plug-in.

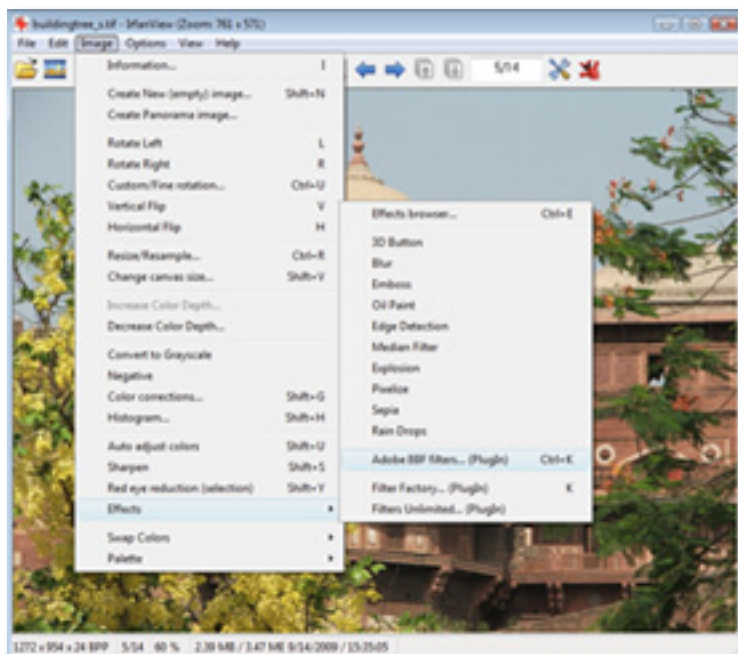


How to install Topaz Detail in Irfanview

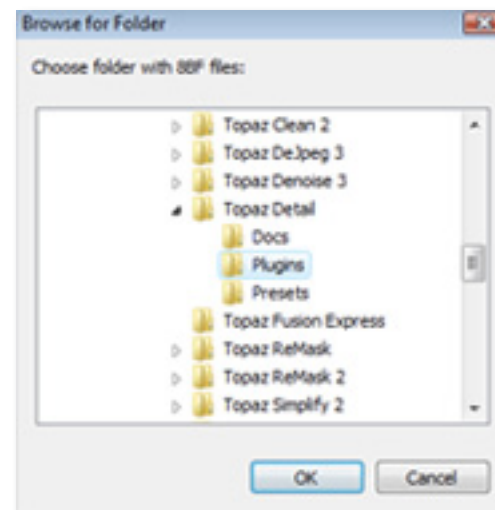
1. Make sure that you have downloaded and installed the 8bf plug-in add-on, available on the Irfanview webpage. (<http://www.software.com/irfanview-plugin>)



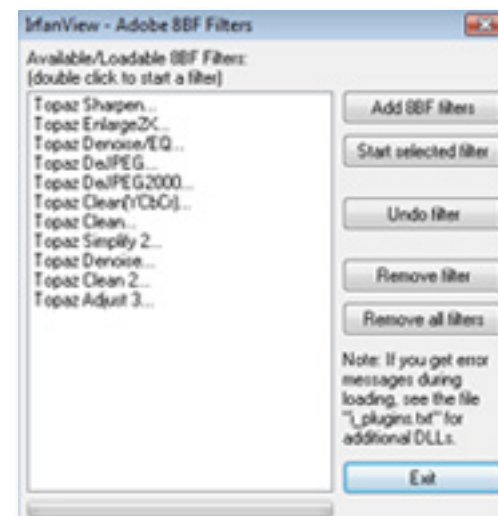
2. Open Irfanview and go to Image -> Effects -> Adobe 8BF filters.



3. In the screen that pops up, select "Add 8BF filters" and navigate to the C:\Program Files\Topaz Labs\Topaz Detail 2\Plug-ins folder and click "OK". You will then see "Topaz Detail 2" in the Available/Loadable 8BF Filters section.



4. To use Topaz Detail 2 in the future, simply go to Image -> Effects> Adobe 8BF filters again and select "Topaz Detail 2".



Uninstalling

To uninstall Topaz Detail follow these instructions:

Mac

1. Quit Photoshop (or other editing program).
2. Navigate to the Topaz Labs support files and frames located at: Macintosh HD -> Library -> Application Support -> Topaz Labs.
3. Locate the Topaz Detail file and move it to the trash. You will need to enter your system password to OK this change.
4. Navigate to your Photoshop plug-ins folder located at: Applications -> Photoshop -> Plug-ins
5. Locate any leftover Topaz Detail files and move it to the trash.

Windows XP*

1. Quit Photoshop (or other editing program).
2. Click on the Start Menu and select Control Panel.
3. Double-click on Add / Remove programs.
4. Select Topaz Detail and click remove.

Windows Vista*

1. Quit Photoshop (or other editing program).
2. Click on the Start Menu and select Control Panel.

3. Select Programs, then Uninstall a Program.

4. Select Topaz Detail and click remove.

Windows 7*

1. Quit Photoshop (or other editing program).
2. Click on the Start Menu and select Control Panel -> Programs -> Programs and Features.
3. Select Topaz Detail and click uninstall.

*Please note that if you also have the 64-bit version of Detail installed, then you will need to first uninstall this version before you can uninstall the regular version.



Before Topaz Detail



After Topaz Detail

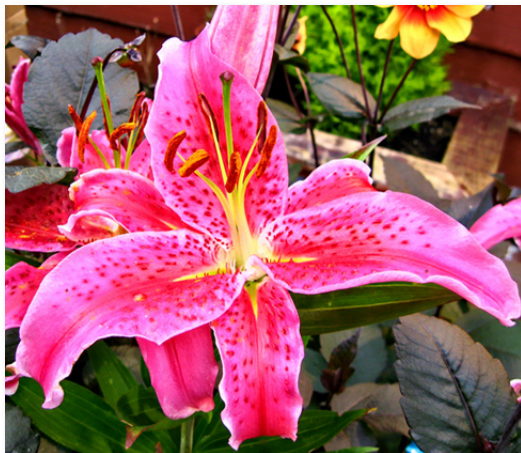
Topaz Detail

About Topaz Detail

Topaz Detail is dedicated to micro and macro detail enhancement. Which allows you to individually or collectively adjust the small, medium and large details within your image for a fully customized look.



Before Topaz Detail



After Topaz Detail

Introduction

You can easily achieve unique detail, tone, contrast and color effects that will make your photos pop without creating halos. The other unique aspect about Topaz Detail is its ability to create strikingly crisp black and white images. Detail includes a convenient black and white preset that you can use as a starting point.

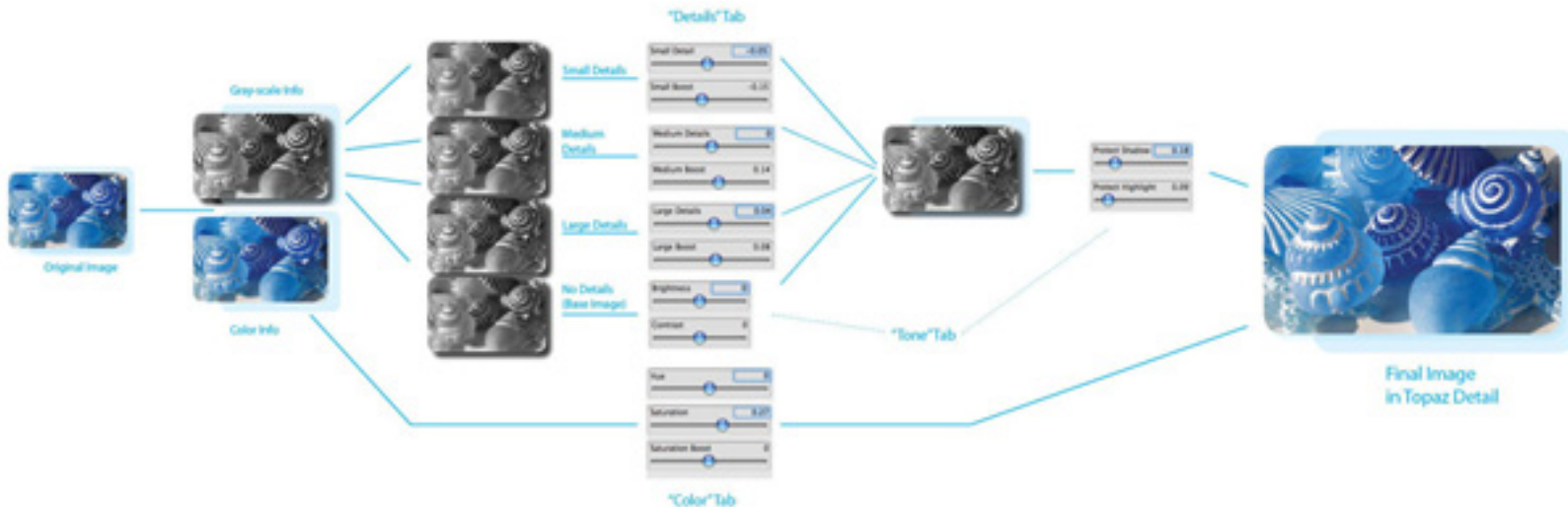
The Primary Functions of Topaz Detail Include:

1. Dynamically enhance large image details to give images depth and more overall appeal.
2. Intelligent small detail enhancement / reduction with innovative detail manipulation functions.
3. Unique color effects via advanced color processing.
4. Advanced tone adjustment features that allow for individual RGB, shadow, highlight, brightness and contrast balancing.
5. Reduce minor instances of blur in images for better overall detail and sharpening enhancements.
6. Create stunning black and white images.

Visit the Detail Gallery to see Topaz Detail at work:
<http://gallery.topazlabs.com/keyword/detail>

How Detail Works

Walk through the internal steps that Topaz Detail takes from start to finish.



1. Start with your original image. Invoke Topaz Detail.
2. Pre-processing starts. Topaz Detail separates your image into two. One based on chrominance (color information) and one based on luminance (grayscale information). These will undergo different processing methods and will be affected by different sliders.
3. The luminance information is further internally broken down into three detail layers based on size, and a base layer. Manipulating these four layers make up the bulk of the detail enhancement functionality of the software. After this step, pre-processing ends and the Topaz Detail user interface pops up. (This is also the portion of pre-processing that runs the slowest...

probably because it has the most advanced break-through technological algorithms.)

4. The user adjusts the large, medium, and small detail sizes, and each individual detail layer is affected appropriately. If you like, you can see what each of the four individual layers looks like. To see the base layer by itself, turn the large, medium, and small sliders too. To see each individual detail size layer, drag that particular one all the way to the right and set the contrast too (which will switch the base layer to neutral gray).

5. The luminance layer is re-combined with the adjusted small, medium, and large detail layers as well as the base layer.

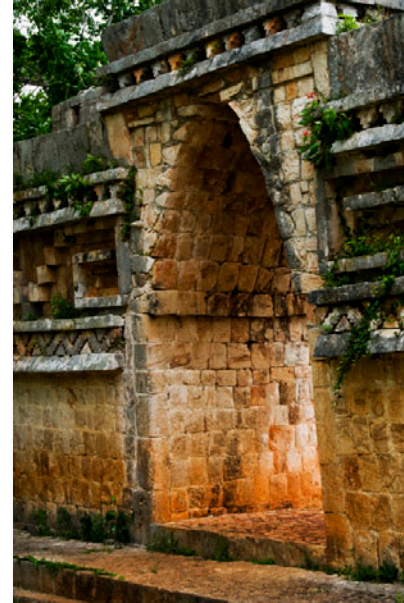
6. Highlight and shadow protection, as set by the user, is applied to the luma layer.

7. The internal luma and chroma layers are re-combined to form your startlingly good final processed image.

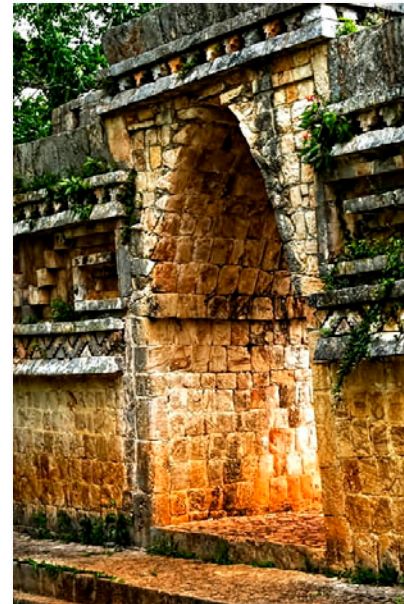
Steps 5, 6, and 7 take no time at all. This means that, although there can be a sometimes annoying wait for the initial pre-processing stage, there will be no actual waiting after that. All adjustments are made instantaneously after the necessary initial pre-processing.

This is the complete internal workflow that Detail uses. Now that you know, it becomes quite obvious how it can sharpen and enhance detail without creating any halos - simply because it doesn't really "sharpen"! All it does is increase the intensity of the appropriate detail layer, which gives a sharpening effect without any of the negative artifacts normally associated with sharpening or detail enhancement.

To connect with other Topaz users, participate in Topaz contests and to see the latest tips, tricks and tutorials sign up for the new Topaz Forum online at:
www.topazlabs.com/forum



Before Topaz Detail



After Topaz Detail

New Detail Features

Topaz Detail 2.0 Features

1. **Auto Updater.** Get software updates instantly.
2. **New user interface.**
3. **Snap / Recall buttons.** Save up to 99 snapshot settings for comparison.
4. **Undo / Redo buttons.**
5. **Collapsible side panels.** Expand and collapse the preset panel and the tool panel for an adjustable workspace.
6. **Collapsible tabs.** Open and close the parameter tabs as you need them.
7. **Preset Enable / Disable option.** Option to enable or disable the preset preview processing at program startup.
8. **Presets Layout.** New preset format with single preset preview window.
9. **Preset Navigation.** Use the up / down arrow keys to navigate the preset list and display the selected preset thumbnail (in preset preview window). Use the return (Enter) key to apply the currently selected preset.
10. **Enable / Disable Tool Tips.** Option to enable or disable the pop up tool tips.
11. **Quick Slider Reset.** Double click on the slider name to reset default slider values.

12. **Speed Improvement.** Speed increase for processing large images.



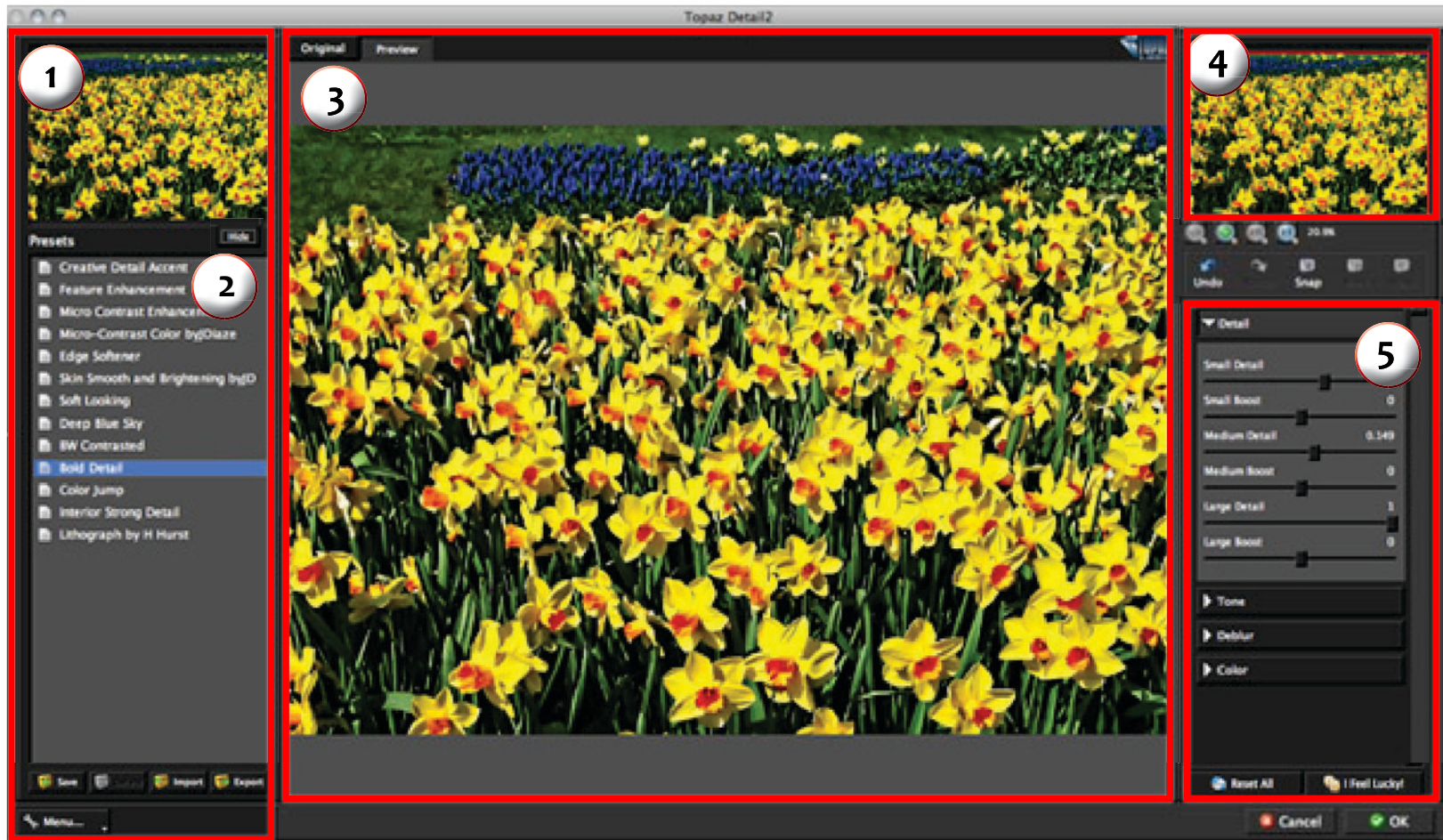
Before Topaz Detail



After Topaz Detail

Interface (Main View)

Although the Topaz Detail interface may look intimidating at first glance, don't worry: it's actually quite simple and easy to use. You'll soon be a pro after experimenting with it for a bit. In order to make sense of the function of each of the various controls, we have divided the interface into a few sections:



1. Presets Preview

The removable pre-view window displays preset previews.

2. Presets Panel

Provides “snapshots” of pre-defined effects.

3. Preview Window

Displays the preview of the original and adjusted image.

4. Preview Navigator

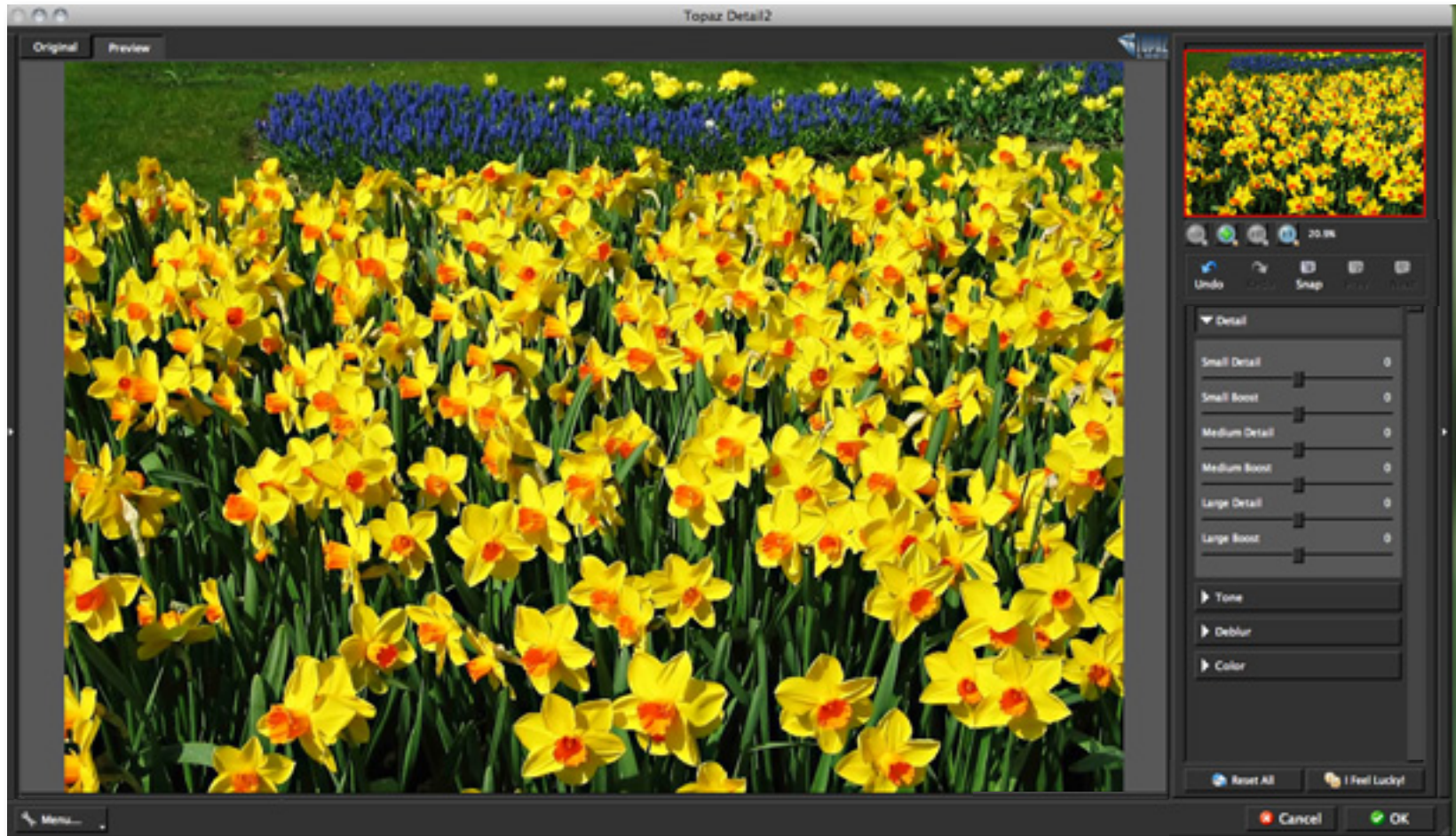
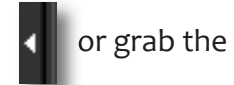
Displays the region of the preview image you are currently focused on.

5. Settings & Parameters

Controls the editing using sliders to adjust the various effects.

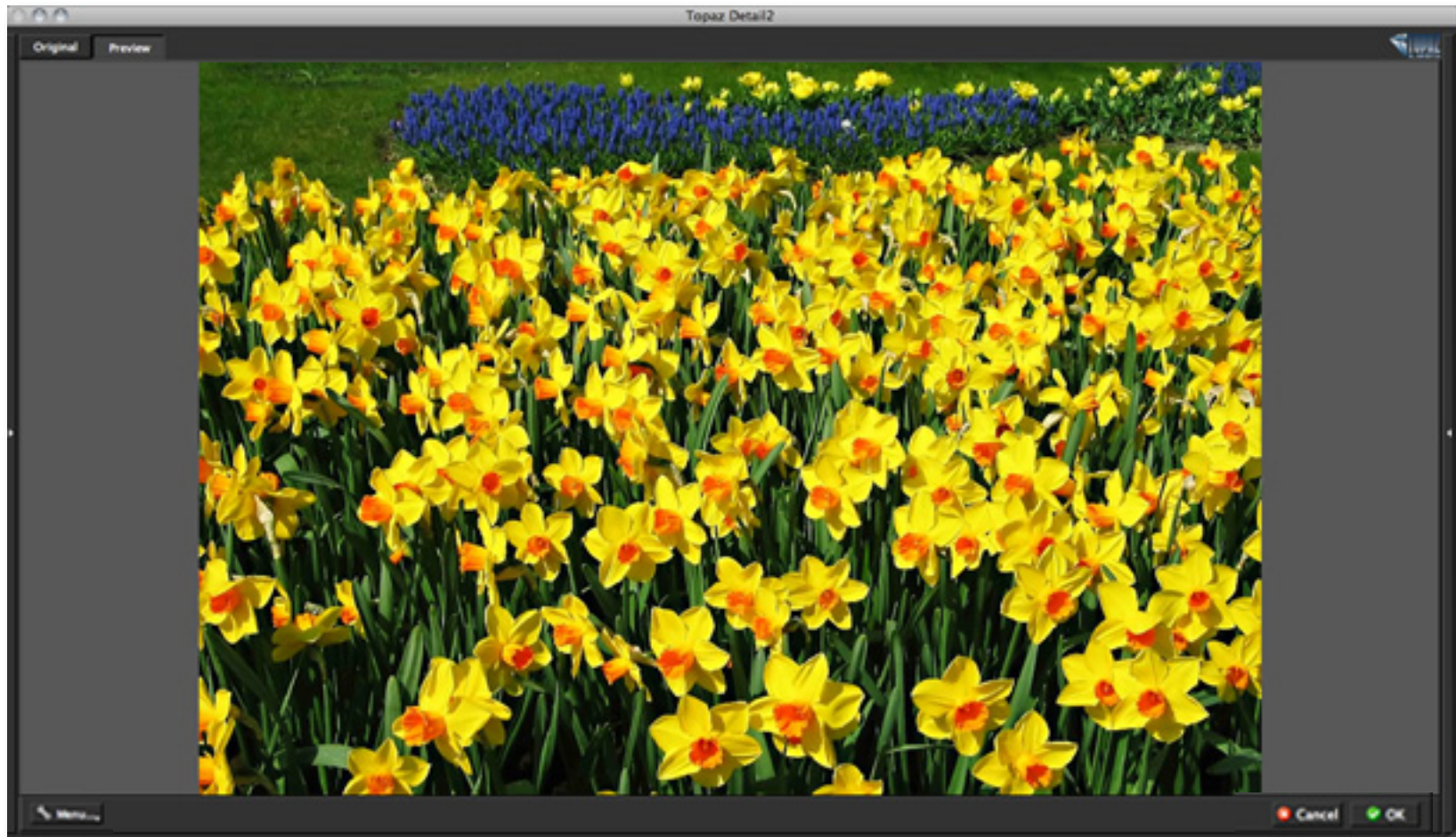
Interface (Tool Panel View)

Use the small white arrows to expand and collapse the preset panel. You can click the white arrow or grab the edge of the panel and drag it in or out.



Interface (No Panel View)

Use the small white arrows to expand and collapse the preset and tool panels. You can click the white arrows or grab the edge of the panels and drag them in or out.

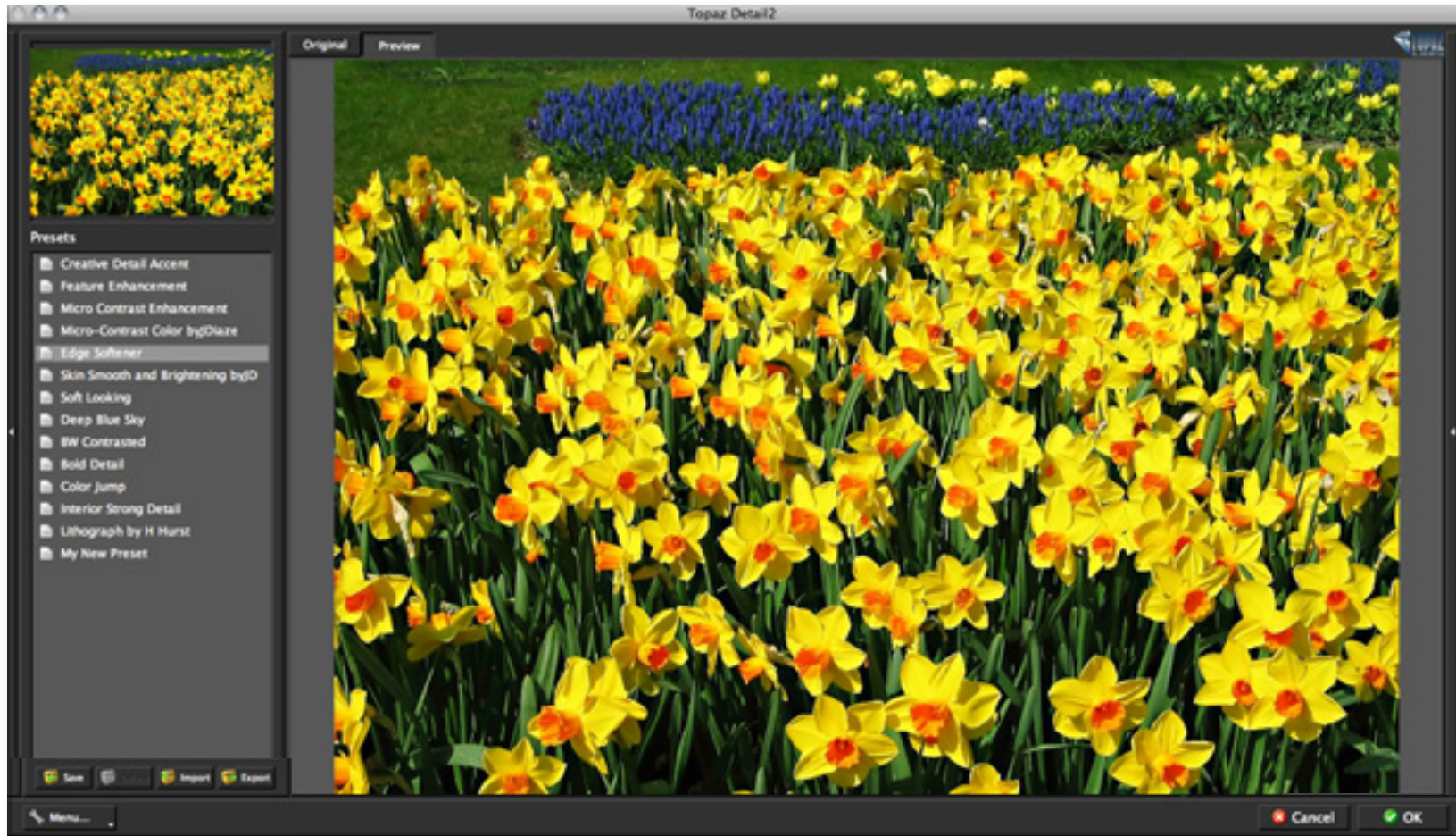


Interface (Preset Panel View)

Use the small white arrows to expand and collapse the tool panel. You can click the white arrow or grab the edge of the panel and drag it in or out.



or grab the



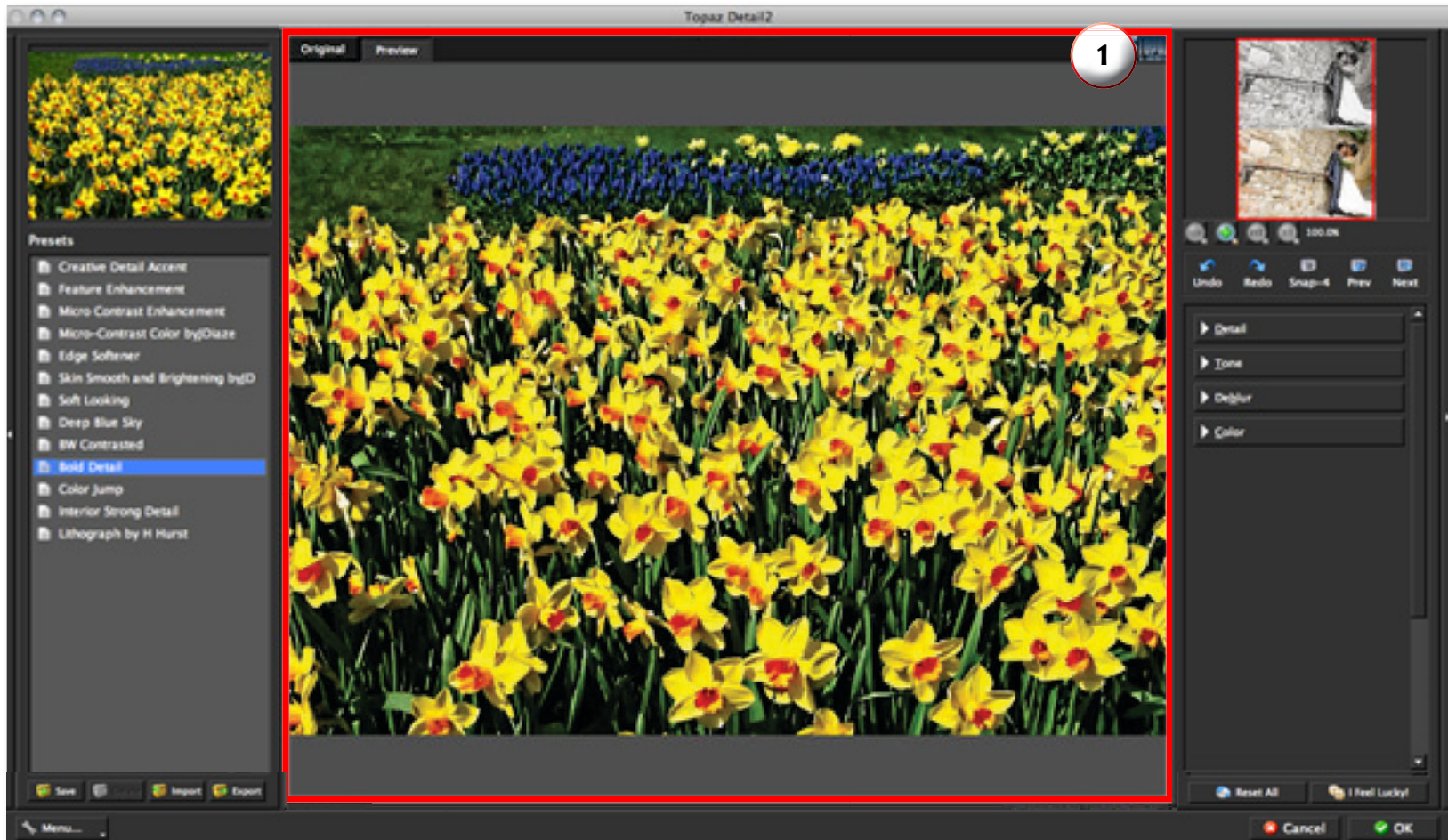
Preview Section

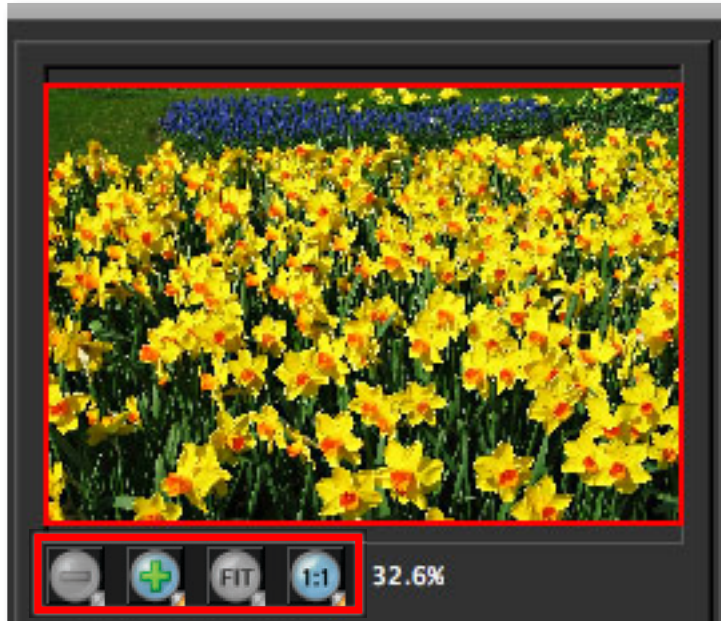
The Preview section is the main element that is centered in the Detail interface. The preview section shows you the original image and the processed preview of the image.

Switch between the Original and Preview tabs to compare the filtered and un-filtered images.

To pan the preview image, click and hold the left mouse button on the preview image and drag it around. When you let go of the mouse button, the new portion of the image will be processed and the result will be displayed.

You can also use SPACE bar to switch back and forth between your filtered and unfiltered image in the preview window.





You can zoom in or out of the preview image by clicking the “+”, or “-” buttons below the preview image. You can also resize the window as well by dragging the bottom right corner in and out.

The “Fit” button will fit the entire image into the preview window.

The “100%” button will zoom to 100% view.

If zoomed below 100% the preview image will be internally resized in order to speed up preview updating.



The “Ctrl +” and “Ctrl -” keys zoom in and out of the image, just like in Photoshop.

You can use the arrow keys to adjust the value of the slider that is currently selected.

A complete list of the shortcut keys can be found in the Shortcut Keys section later in this manual.

Photoshop and other host software support many Image Modes, such as Grayscale, RGB, LAB, CMYK, etc. Images can also be 8, 16, or 32 bits per channel. Topaz Detail supports both 8 bits per channel and 16 bits per channel. Topaz Detail supports RGB mode only. To work on black-and-white images, first convert them to RGB mode.

Presets

Presets are a great way to speed up and simplify the whole process of using Topaz Detail. Presets are set previews with previously defined settings that you can recall and reapply at any time.

We've included some default presets for you and, although they won't work for every single photograph, they serve as excellent starting points for customized tweaking.

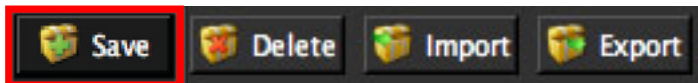
Applying Presets

Applying a default preset is easy and intuitive. Simply clicking on a preset will change all the settings in Topaz Detail to match those in the selected preset.

To get the exact results you want, you may still want to go through the tabs and tweak the parameters.

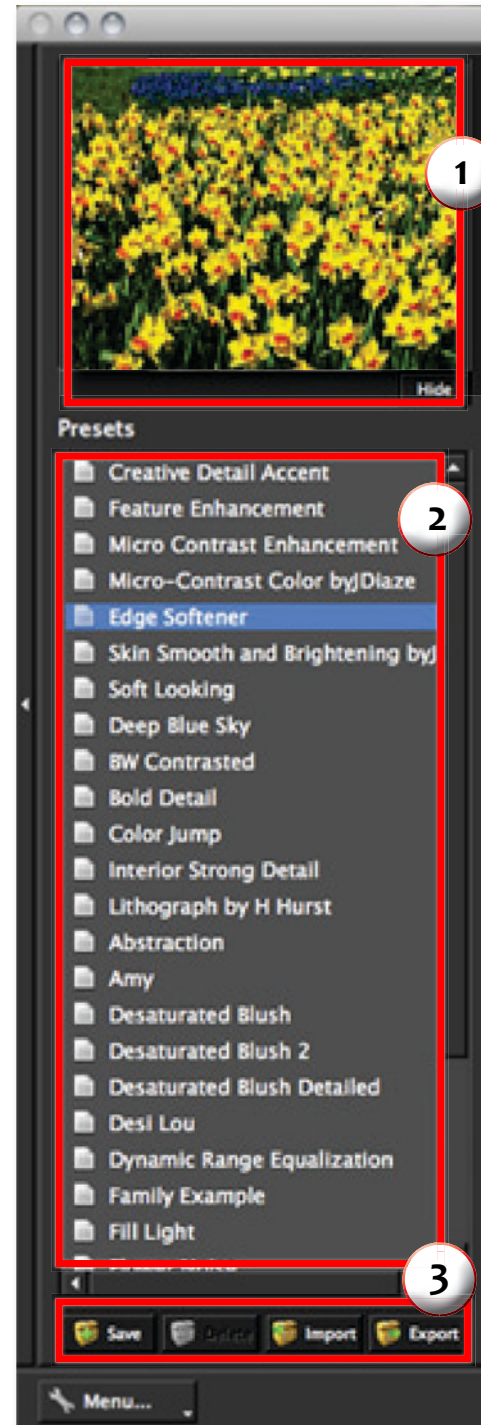
Adding Presets

Sometimes it's convenient to be able to define presets and save your settings for later use. To do this, first adjust the Topaz Details parameters until you're satisfied with the result. Then, click on "Save".



Remember that you can easily expand or collapse the presets panel by clicking on the small white arrow on the edge of the panel or by grabbing the panel edge and dragging it in or out.

Work Area



1. Presets Preview

The removable preview window displays preset previews. Click Hide / Show to expand or collapse the preset preview window at anytime during your workflow.

2. Presets List

Lists all of the saved presets available for use.

3. Preset Options

The preset options allow you to save your presets, delete presets (default presents cannot be deleted), import new presets and export your saved presets to share with your friends.

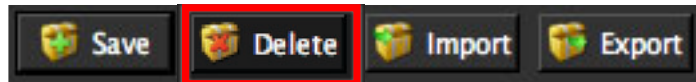
Then enter a preset name, select the type of image that it is good for and then enter a description and click “OK”. You can also select a second image category type that the preset is good for.

Note that if the name you’ve entered is the same as a preset you’ve already defined then you will be asked if overwrite the previous one.

Your preset will be automatically saved as a new file with a “.tpp” extension in the Topaz Detail Presets menu and the preview is automatically generated. To apply it later, just click it like any other preset.

Deleting Presets

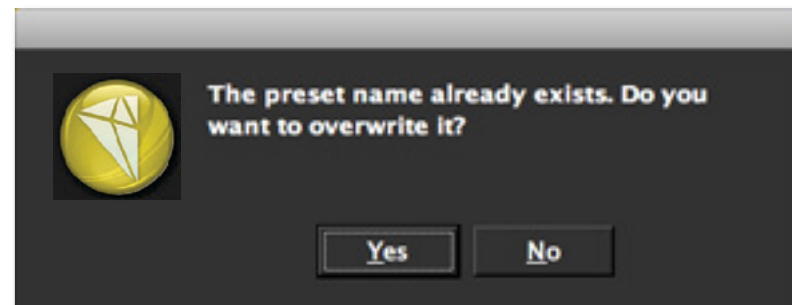
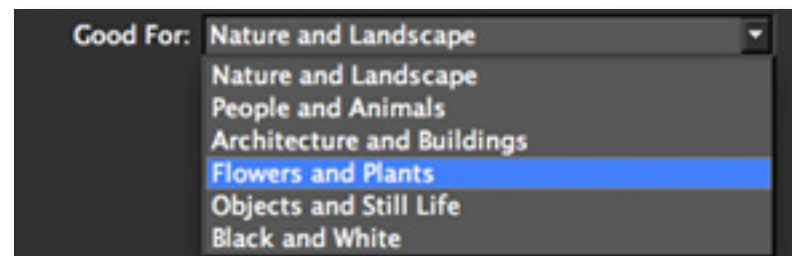
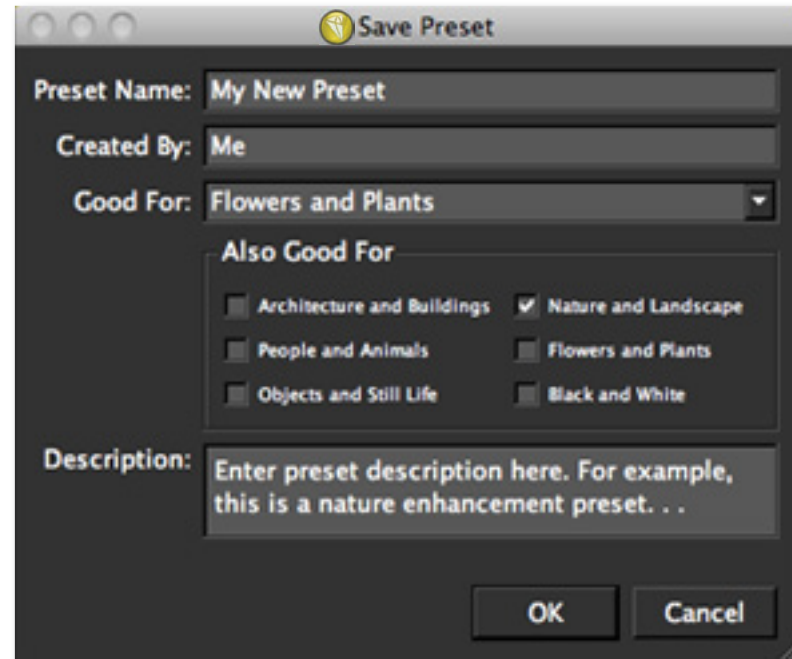
If you’d like to delete a preset, use the Delete option with your desired preset selected.



Please Note: Default presents cannot be overridden or deleted. Once you delete a preset it or overwrite it, it cannot be retrieved.

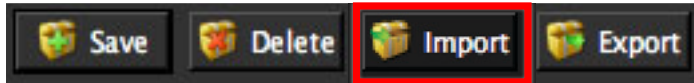
Saved presets are located in the Topaz Detail “Presets” folder: C:\Program Files\Topaz Labs\Topaz Details\Presets unless you’ve opted to install Topaz Details into a different directory.

Mac users have this folder at HD/Library/ApplicationSupport/TopazLabs/Details/Presets.

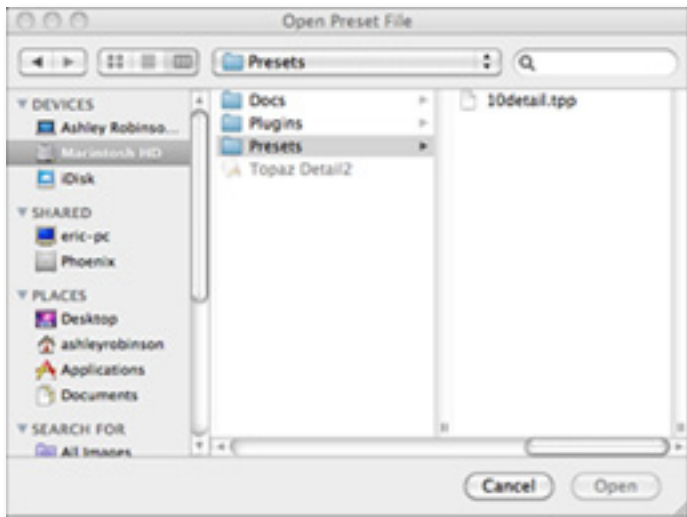


Importing Presets

To import a preset file, click the “Import” button.



This will open up a “Browse” box to import a saved preset from your computer into Topaz Detail. This is useful if you have downloaded a preset file that you’d like to use.



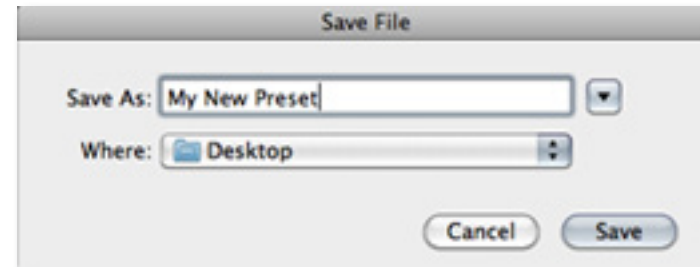
Visit the [Topaz Labs Blog](#) which features the latest Photography, software and design information including tutorials, videos, and thoughts about both Topaz and non-Topaz topics.

Exporting Presets

To export the preset file to a certain location, click “Export”.



Name your preset and save it to your desktop or other specified location that you have reserved for saved presets.



You can then share this preset file with others who may then import it.

Sharing Presets

Feel free to share your saved presets by emailing them to your friends and having them put it into their Topaz Detail Presets folder.

Tools

You will use the various tools in the tools panel during your workflow to make your image adjustments.

1. Preview Navigator - Displays the region of the preview image you are currently focused on.
2. Zoom Buttons - Use the zoom buttons to zoom in and out of your image. Or you can also set your image to fit the preview window or to view it at 100%.
3. Undo and Redo buttons
4. Snap and Recall buttons. Save up to 99 snapshot settings for comparison.
5. Sliders and Parameters - Controls the editing process using sliders to adjust the various effects.
6. Additional Slider Controls - Use the “Reset All” button to reset all of the sliders values back to zero. Use the “I Feel Lucky!” button to apply randomized settings to your image. This is useful when you want to experiment with different settings.

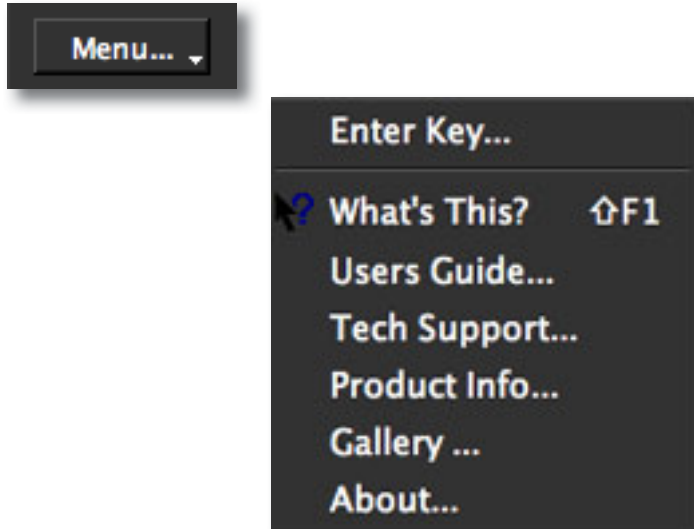
Have more questions about Topaz Detail 2 or any of the other Topaz software programs?

Check out the new Topaz Knowledge Base online at:
www.topazlabs.com/support/kb



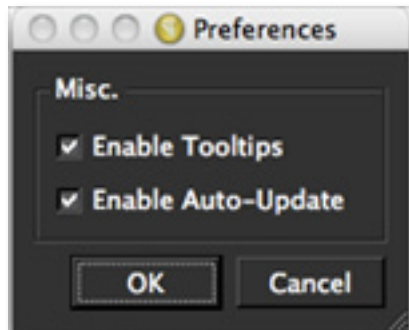
Menu

You can access Topaz Detail's menu by clicking on the "Menu..." button at the bottom of the interface.



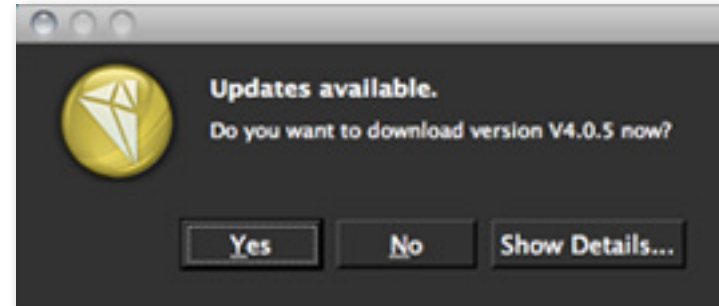
Preferences

Select this to enable or disable the program tool tips or the Auto-Update feature.

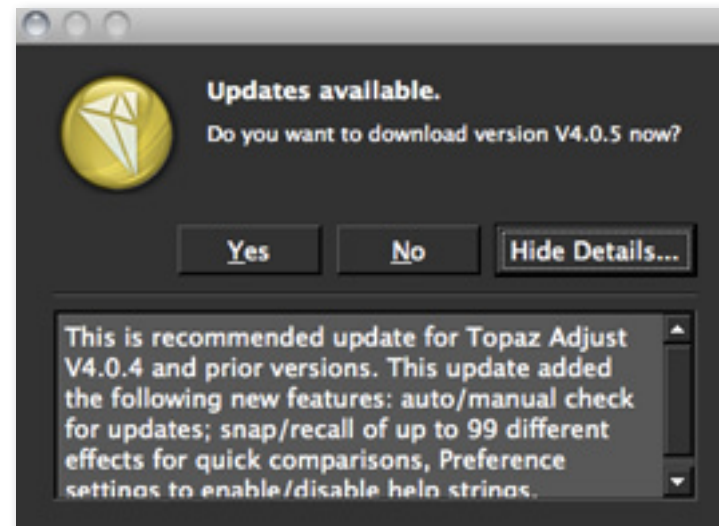


Check for Update

Checks for available Topaz Detail updates.

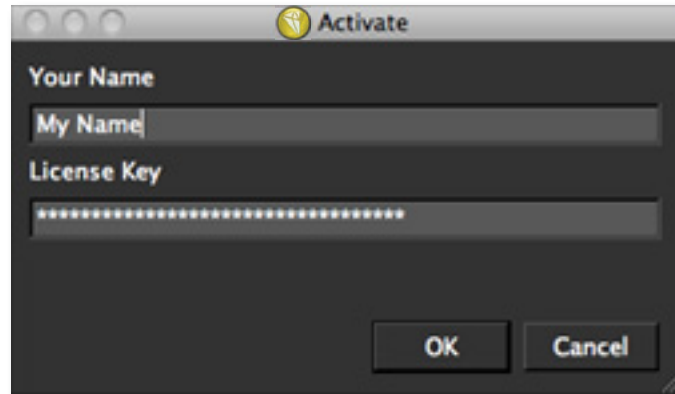


Click the Show Details button to get find out what's included in the update before you install.



Enter Key

Select this to enter your trial or purchased license key.

**What's This?**

Select this (or click F1) then click on a feature in the Detail interface to learn more about it.

Users Guide

Select it to pull up this user guide.

Tech Support

Brings you to the Topaz Labs support page where you can request assistance from our support specialists, contact our customer service team, retrieve lost license keys, or browse through our Knowledge Base.

Product Info

Select this to go to the Topaz Detail web page to learn more about the Topaz Detail plug-in.

Gallery

Select this to open up your Internet browser and go to the Topaz Detail image gallery to see other user images enhanced with Topaz Detail.

MyTopaz

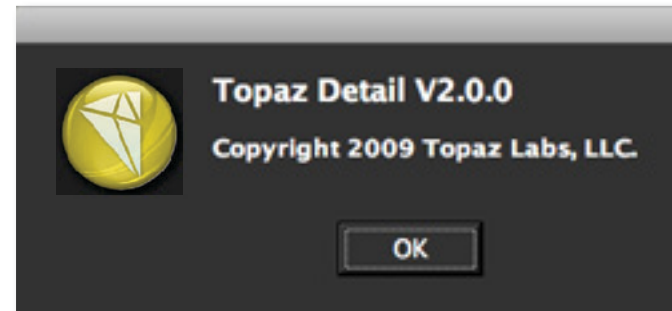
Brings you to the Topaz community where you can connect and interact with other Topaz users. Here you can also participate in discussions and contests, and share your favorite Topaz images.

Tutorials

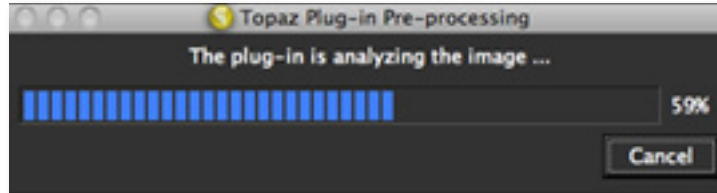
Brings you to the Topaz Detail tutorials page where you can access a variety of helpful video and text tutorials. You can also submit tutorials that you created here as well.

About

Select this to see what version of Simplify you currently have.



Pre-Processing



What is Pre-Processing?

Pre-processing is an automated process that divides your image up into three layers of image detail: Small, Medium and Large.

Why is pre-processing necessary?

The unique method of pre-processing is necessary because it extracts image detail in a way that does not introduce a halo-effect when you go to manipulate your image with the adjustment sliders.

Is it supposed to take this long?

Yes, pre-processing can take a few minutes, especially if you are using a larger image. Delayed pre-processing times allow for quicker post-processing times after you finish your image adjustments.

Does my image have to be pre-processed?

Yes, all images must be pre-processed before being enhanced in Topaz Detail.

Looking for quick, crisp black and white conversion like the cat image to the right?

Use the BW Contrasted preset in the Topaz Detail presets menu to instantly transform your image to black & white.



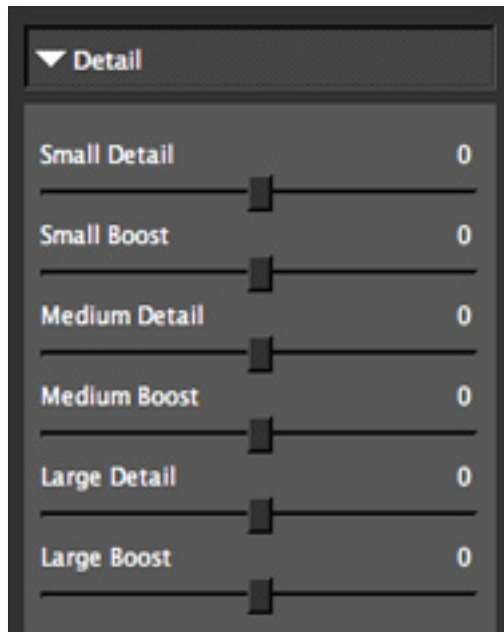
Parameters

Topaz Detail has four settings tabs and a total of 18 parameters to help you achieve optimal image results.



Details

The Details tab uses an innovative layering technique that allows you to adjust three levels of details within an image. It can adjust the small, medium and large details in an image. Different combinations of the detail settings can create many different possibilities.



Need to reset your slider values?

Simply double-click on the slider name above the slider control to instantly reset the slider value to 0.

Settings & Parameters

Small Details

Small details adjustment parameter. Adjusting this parameter affects the visibility of the very fine details in an image.

Small Boost

Adds more flexibility to the small-detail slider. The boost will weaken or strengthen the smaller details.

Medium Details

Medium details adjustment parameter. Adjusting this parameter affects the visibility of the medium details in an image.

Medium Boost

Adds more flexibility to the medium-detail slider. The boost will weaken or strengthen the medium details.

Large Details

Large details adjustment parameter. Adjusting this parameter affects the visibility of the very large details in an image.

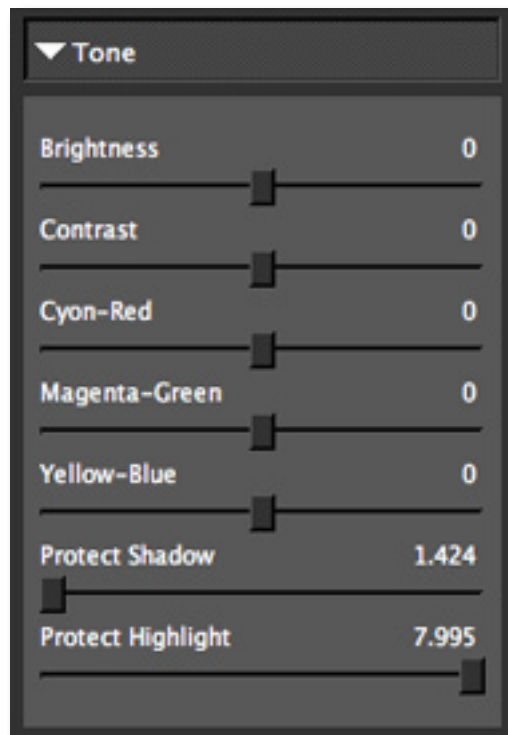
Large Boost

Adds more flexibility to the large-detail slider. The boost will weaken or strengthen the large details.

A great way to fix skin texture and reduce image noise is to use the Small Details and Small Boost slider.

Tone

The Tone tab allows you to increase or reduce the quality of brightness, deepness, or hue of a tint or shade of a color in the image. This tab gives the user creative control over enhancing or suppressing the range of color.



Please visit the Topaz Detail website at <http://www.topazlabs.com/detail> for video tutorials, tips, and tricks!

Settings & Parameters

Cyan-Red Tone

Affects the brightness of the shades closely related to the red color range.

Magenta-Green Tone

Affects the brightness of the shades closely related to the green color range.

Yellow-Blue Tone

Affects the brightness of the shades closely related to the blue color range.

Brightness

Controls the overall brightness of the image.

Contrast

Controls the range of tones from light to dark in the image.

Shadow

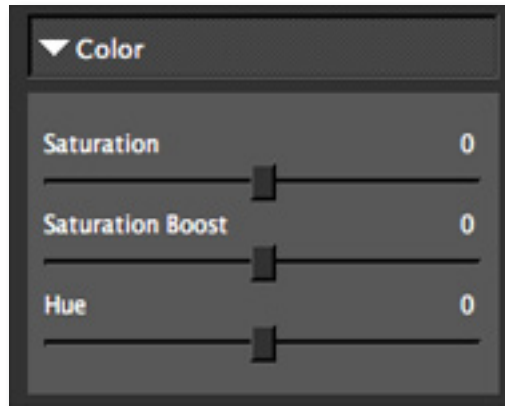
Built-in protection from shadows (the darkest tones). Increasing this parameter reduces the harshness of shadows and reveals previously obscured detail in shadow areas. A setting of 0 disables shadow protection.

Highlight

Built-in protection from highlight (the lightest tones) blowout. Increasing this parameter reduces the harshness of highlights and reveals previously obscured detail in highlight areas. A setting of 0 disables highlight protection.

Color

The Color tab applies adaptive color processing. It works on the image's color. Interesting color effects can be created here.



Saturation

Standard parameter to increase or decrease the overall saturation of the image.

Saturation Boost

Saturation boost increases the color detail of the weaker colors in the image.

Hue

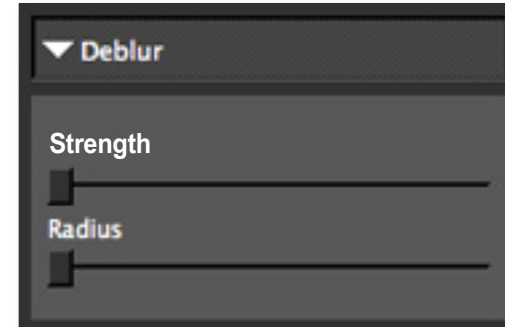
A convenient hue correction control.

The best way to get great-looking images is to experiment with the filter until you're satisfied. Despite the number of sliders and settings, getting a great result is easier than you might think!

Settings & Parameters

Deblur

The deblur tab allows you to reduce blur in your image so that your detail enhancements are clear, crisp and sharp for maximum effect.



Strength

Standard parameter to increase or decrease the amount of blur reduction in the image.

Radius

The larger the radius is, the larger the size of the de-blurred details will be. The smaller this parameter is, the smaller the size of the de-blurred details.

Additional Deblur notes:

1. Not every image requires use of the deblur tab.
2. Ideal use is for small occurrences of blurriness.
3. Most useful when resizing high-pixel count images.
4. Over-applying will result in image graininess.
5. Best when used in conjunction with the Small Details and Small Boost sliders.
6. Preview zoom MUST be 50% or more or the Deblur feature will not be accessible and you will see the message below:



Preview must be greater than 50% !

Sample Project #1

In this section, we will walk you through a sample project, step-by-step, to help you become more familiar with the Detail program.



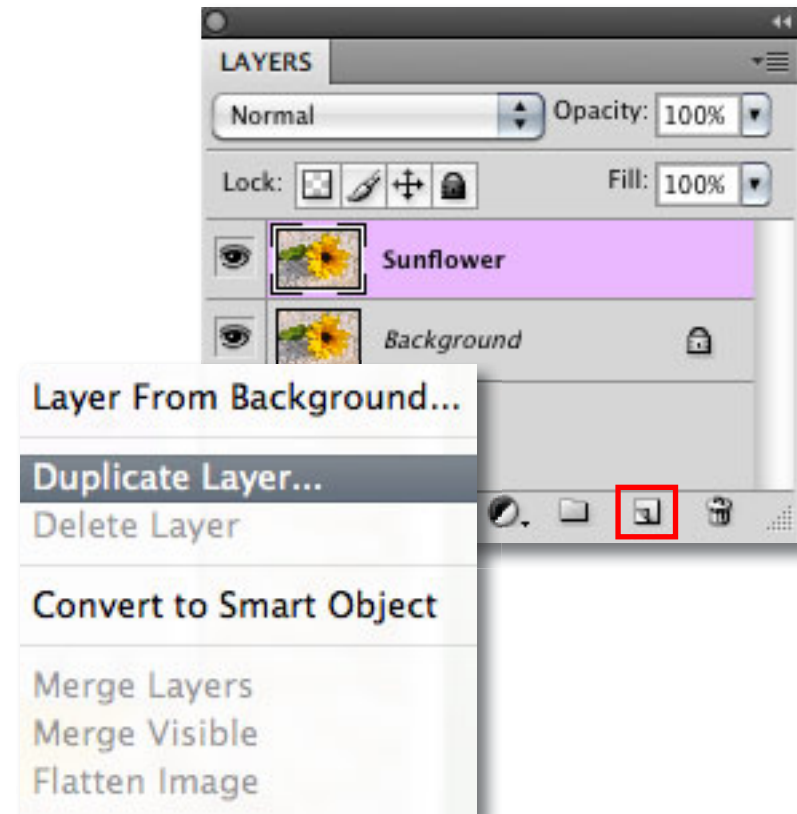
Before Detail



After Detail

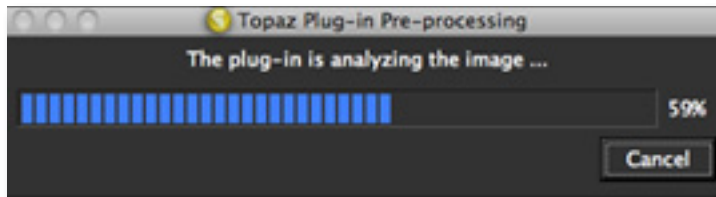
We will be using this photo of a sunflower for our example. You can see the difference in detail and color enhancement in the Before and After shots. In the following steps, we will show you how to achieve optimal results with your own photos, following this model. Let's get started.

1. Open an image file.
2. Create a duplicate layer of your image. Right-click on your image layer in your layers and select "Duplicate Layer". You can also achieve this by selecting your image layer and dragging it down to the new layer icon.



3. To begin working on your image go to Filters -> Topaz Labs -> Detail 2

4. When you start Topaz Detail your image will go through a pre-processing phase to prepare your image for the detail adjustments. This may take a minute.



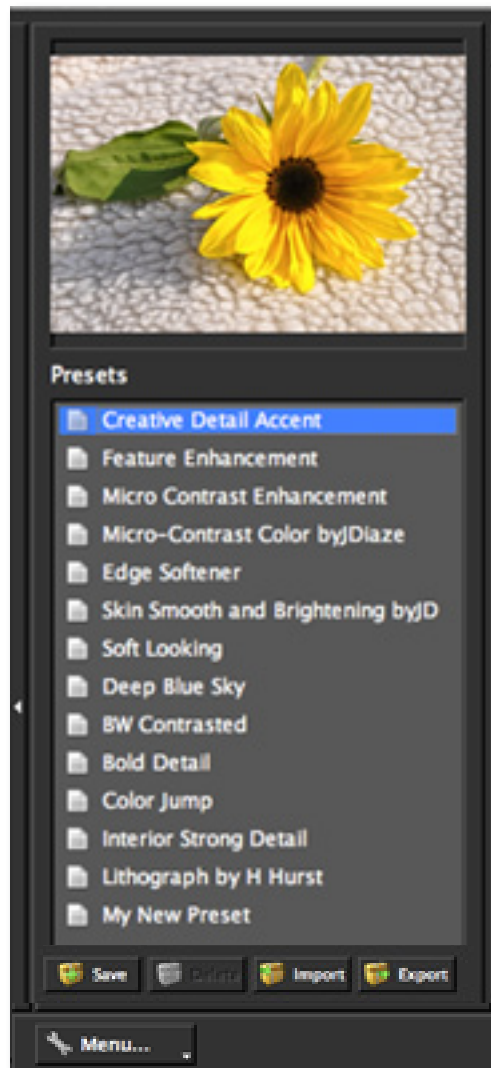
5. Once your image loads, use the zoom tools to zoom in on a specific part of your image. Then you can click on the preview and drag it around until you find an area that you like.

We want to enhance the natural details and elements of this image so we will be working with the adjustment sliders for this example, but you can start any way you like.

For more color, exposure and detail tools be sure to check out Topaz Detail at: www.topazlabs.com/detail



6. If you want to choose a default preset, scroll through the panel on the left side of the screen. To select it, just click on it and the sliders will automatically adjust to the pre-defined settings and parameters. For this example we will be using the Creative Detail Accent preset.

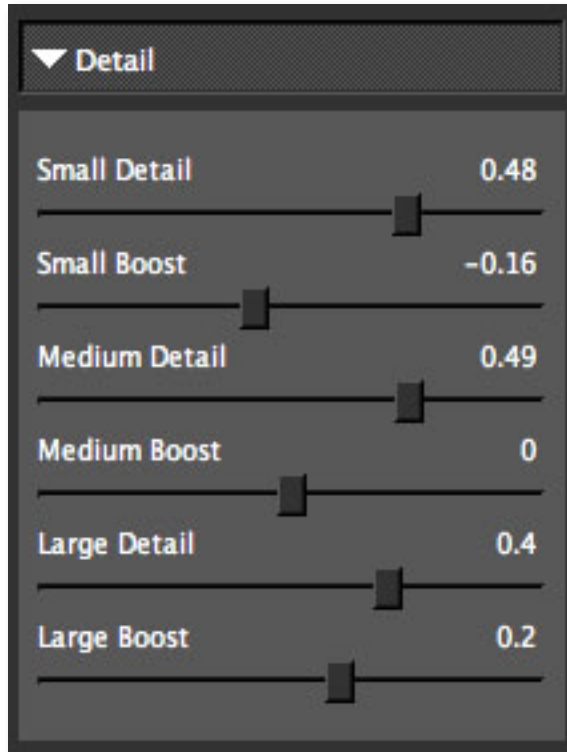


If you are satisfied with the preset adjustments then you can click “OK” to process your image and save it back to Photoshop.

If you would like to make some additional adjustments to your Detail settings then you can do so by adjusting any of the sliders in the four tabs manually until you achieve your preferred image results.

Don't forget that you can use the shortcut keys in Topaz Detail 2 to speed up your workflow.

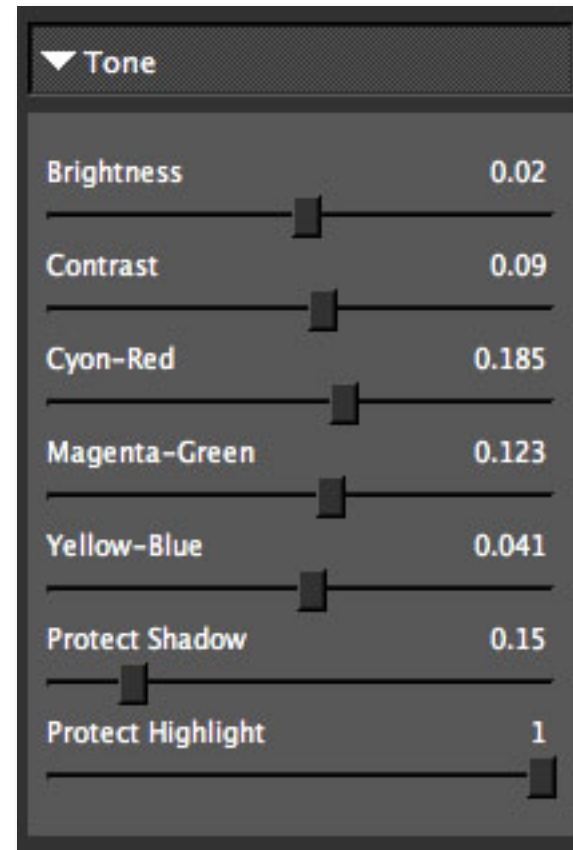
7. Start in the Details tab. It is a good idea to begin here, and then progress to the Tone, Deblur and Color tabs in order to see the effects of your adjustments easily.



8. Slowly adjust the Small, Medium and Large detail sliders to enhance the detail effect in the image. Then adjust the Small, Medium and Large Boost sliders which will allow you to adjust the intensity of the Small, Medium and Large image details.

When you are happy with the Detail settings, move to the Tone tab.

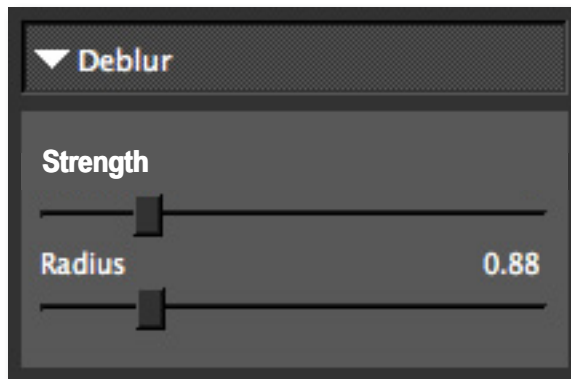
9. The Tone tab gives you optimal control over the individual tonal-range of colors in the image. This is where you can really make your photo pop.



10. Gently adjust the Tone sliders to increase or reduce the amount of brightness in a particular color range. Then use the remaining sliders to adjust the quality of brightness, deepness, or hue of a tint or shade of a color in the image.

When you are happy with the Detail settings, move to the Deblur tab. Please note that not every image will need adjusting in the Deblur tab. If your image does not require adjusting in this area then feel free to skip this part and move on to the Color tab for your final adjustments.

11. The Deblur tab allows you to reduce small occurrences of blurriness in your image.

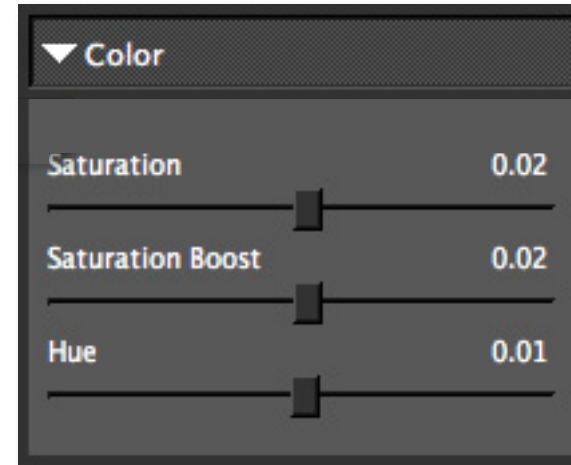


10. Gently adjust the Strength sliders to increase or reduce the amount of blur reduction in your image. Then adjust the Radius slider to determine how that blur reduction is applied.

When you are happy with the Deblur settings, move to the Color tab.

If you see a difference in color from the preview in the Topaz Detail interface and the final processed image back in Photoshop then you will want to turn off your Proof Color feature in Photoshop. You can do this by going to: View -> Proof Setup

Finally, in the Color tab, you adjust the saturation and hue in your image. Use the sliders here to perfect the overall color in your image.



All that's left now is to click OK and watch your image transform.



Now you should have a dramatically enhanced and colorful image!

Sample Project #2

In this project, we will walk you through a second Detail workflow, this time focusing on color to black and white conversion.



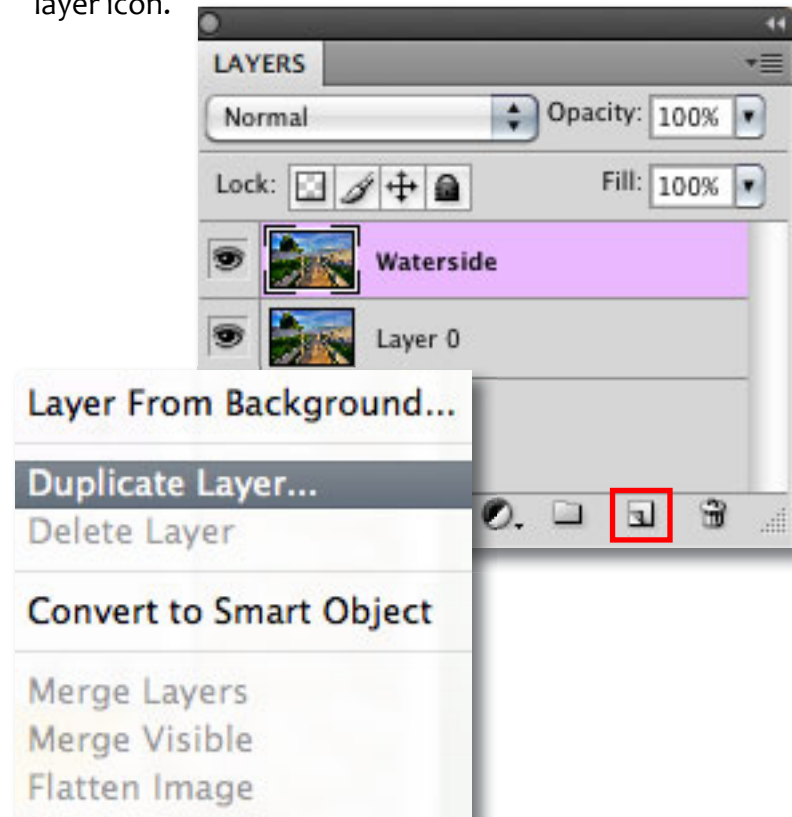
Before Detail



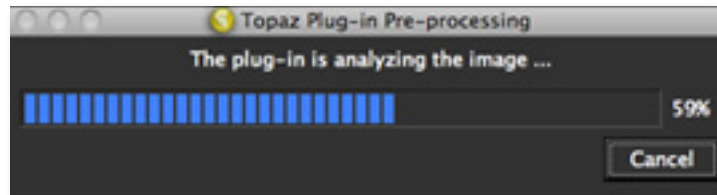
After Detail

We will be using this photo for our example. You can see the difference in detail enhancement and color desaturation in the Before and After shots. In the following steps, we will show you how to achieve optimal results with your own photos, following this model. Let's get started.

1. Open an image file.
2. Create a duplicate layer of your image. Right-click on your image layer in your layers and select "Duplicate Layer". You can also achieve this by selecting your image layer and dragging it down to the new layer icon.



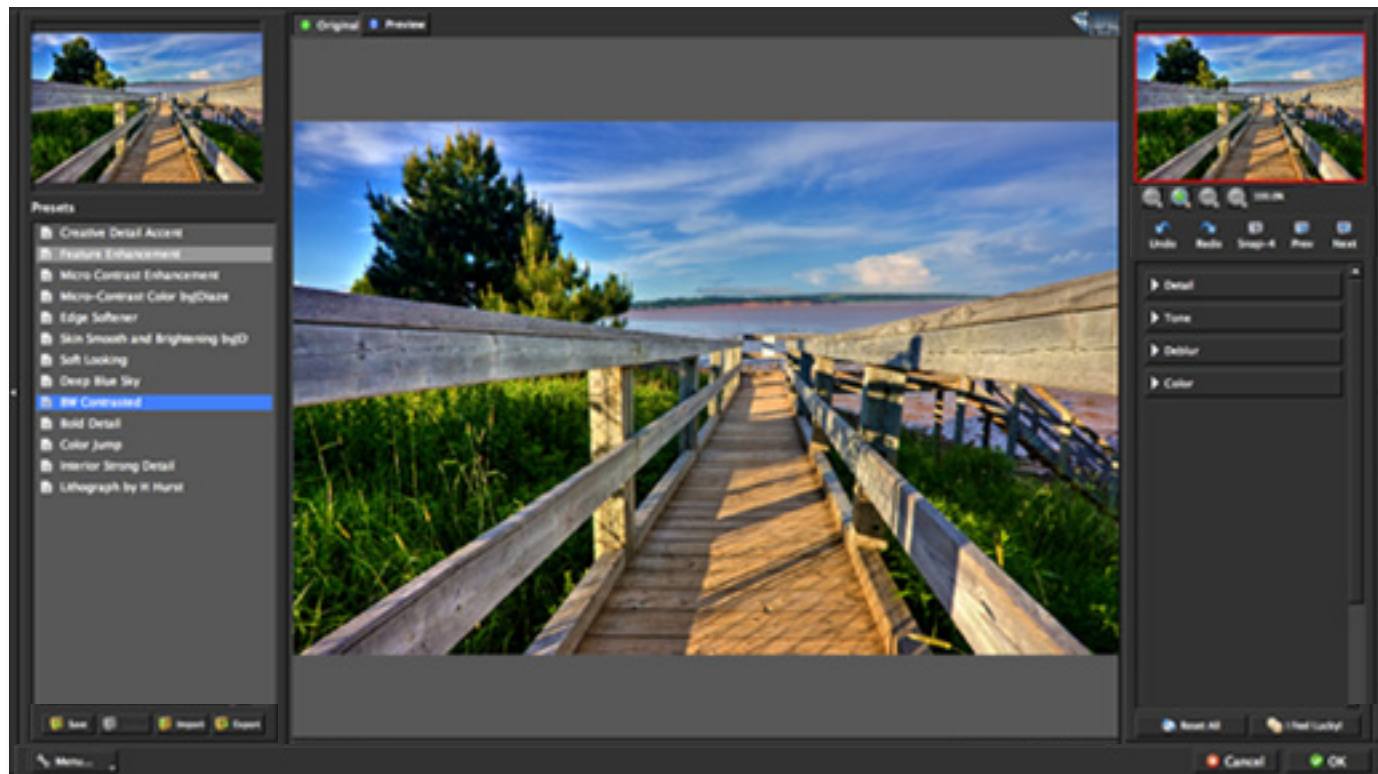
3. To begin working on your image go to Filters -> Topaz Labs -> Detail 2



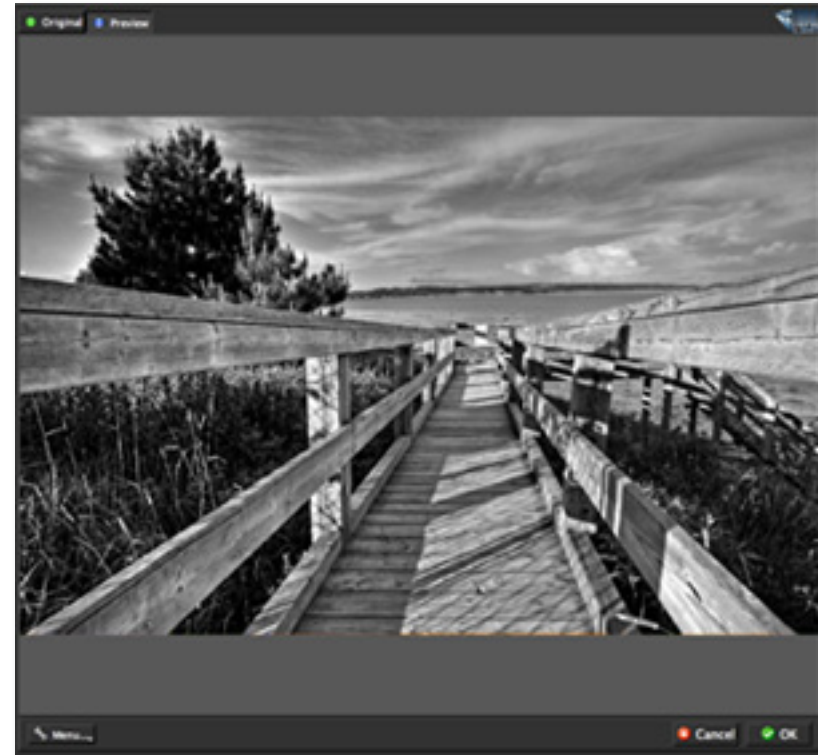
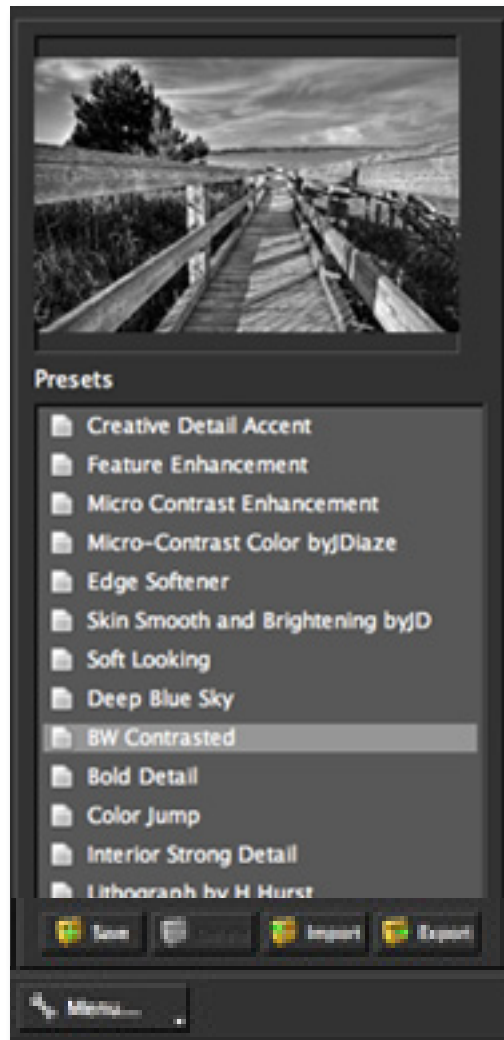
4. When you start Topaz Detail your image will go through a pre-processing phase to prepare your image for the detail adjustments. This may take a minute.

5. Once your image loads, use the zoom tools to zoom in on a specific part of your image. Then you can click on the preview and drag it around until you find an area that you like.

We want to transform this image into a black and white image and also enhance the natural details and elements of this image so we will be working with the presets and detail sliders for this example, but you can start any way you like.



6. If you want to choose a default preset, scroll through the panel on the left side of the screen. To select it, just click on it and the sliders will automatically adjust to the pre-defined settings and parameters. For this example we will be using the BW Contrasted preset.

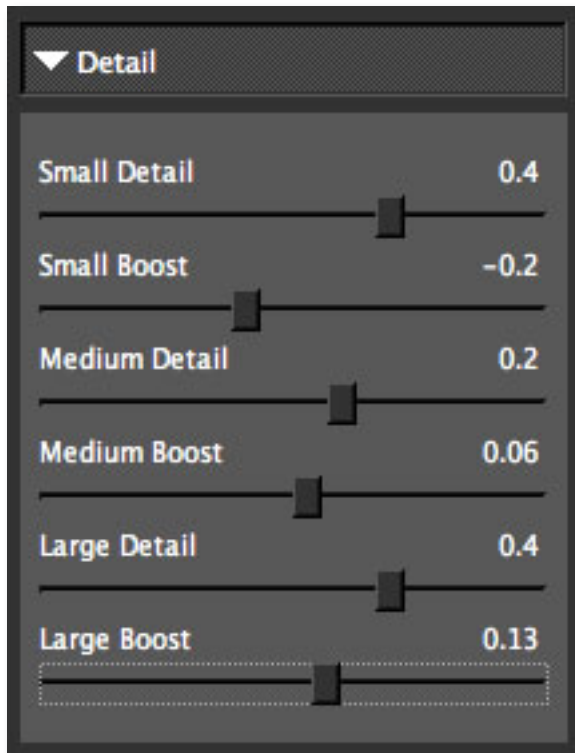


If you are satisfied with the preset adjustments then you can click “OK” to process your image and save it back to Photoshop.

If you would like to make some additional adjustments to your Detail settings then you can do so by adjusting any of the sliders in the four tabs manually until you achieve your preferred image results.

Don't forget that you can use the shortcut keys in Topaz Detail 2 to speed up your workflow.

7. Start in the Details tab. It is a good idea to begin here, and then progress to the Tone, Deblur and Color tabs in order to see the effects of your adjustments easily.

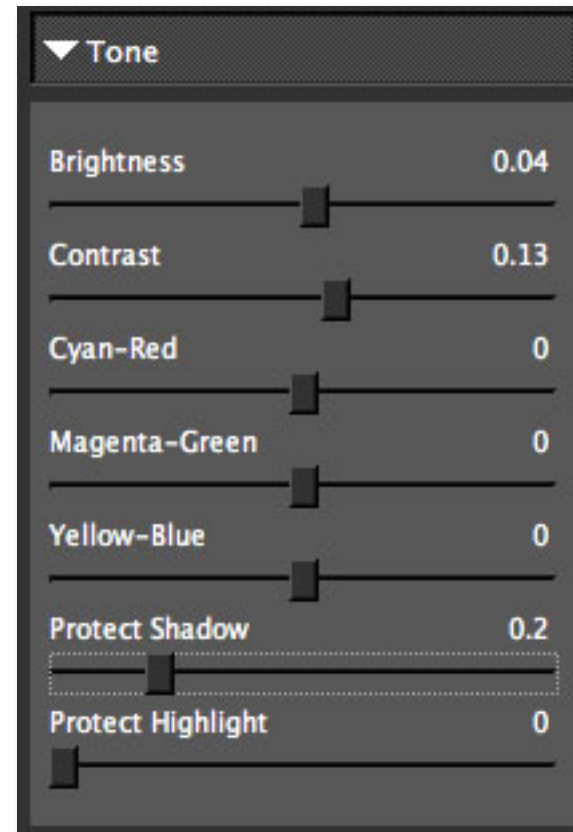


8. Slowly adjust the Small, Medium and Large detail sliders to enhance the detail effect in the image. Then adjust the Small, Medium and Large Boost sliders which will allow you to adjust the intensity of the Small, Medium and Large image details.

When you are happy with the Detail settings, move to

the Tone tab.

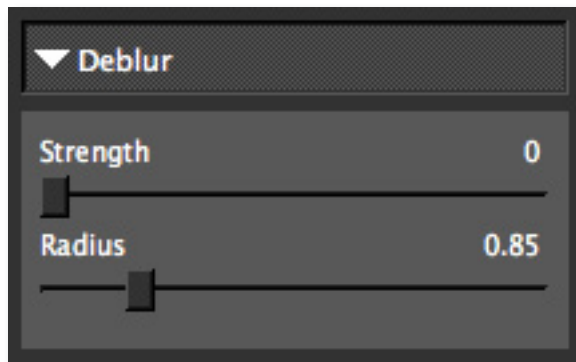
9. The Tone tab gives you optimal control over the individual tonal-range of colors in the image. The contrast slider will be the most important setting here.



10. Gently adjust the Tone sliders to increase or reduce the amount of brightness in a particular color range. Then use the remaining sliders to adjust the quality of brightness, deepness, or hue of a tint or shade of a color in the image.

When you are happy with the Detail settings, move to the Deblur tab. Please note that not every image will need adjusting in the Deblur tab. If your image does not require adjusting in this area then feel free to skip this part and move on to the Color tab for your final adjustments.

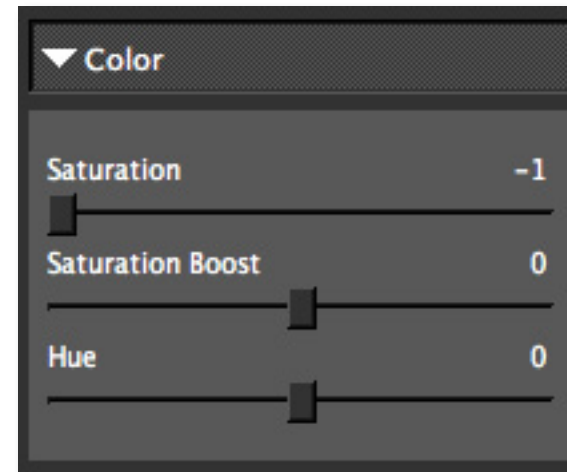
11. The Deblur tab allows you to reduce small occurrences of blurriness in your image.



10. Gently adjust the Strength sliders to increase or reduce the amount of blur reduction in your image. Then adjust the Radius slider to determine how that blur reduction is applied.

When you are happy with the Deblur settings, move to the Color tab.

Finally, in the Color tab, you adjust the saturation and hue in your image. Use the sliders here to perfect the overall color in your image.



All that's left now is to click OK and watch your image transform.



Now you should have a beautiful black & white image.

Achromatic - Without color.

Adjustment Layer – A layer that allows you to adjust the look of an original image without making it permanent. With adjustment layers you can make various changes to a layer without damaging it and go back and readjust it at anytime.

Algorithm - Any bit of code or programming that defines a process.

Blur - Make or become unclear or less distinct.

Brightness - The degree to which a color sample appears to reflect light.

Chroma - Purity or intensity of color. The difference of a color against the brightness of another color that appears white under similar viewing conditions.

CMYK - Cyan, magenta, yellow, and black. A color model commonly used for 4-color printing by printers to define and mix all of the colors they are capable of outputting.

Color - The human perceptual response to different wavelengths of light impinging on the photo receptors in the retina.

Color channel - The visual component of a color digital image that represents all the pixels in that picture made up of a specific primary color. In a typical digital photo, the primary colors of red, green and blue (from the RGB color model) create all the colors in

that photo, which may be represented by three color channels, each of red, green or blue.

Color Profile - defines the range of colors that can appear in a digital photo.

Desaturate - Decreasing the intensity of a color (hue).

Download - The process of transmitting or transferring data from one device to another.

Export - Outbound data transfer in a format that can be used by other programs.

Grain - Lightly-speckled noise that is used to apply a more natural look to an image.

Hue - One of the main properties of a color, described with names such as “red”, “yellow”, etc.

Import - Inbound data transfer into a file or document.

ISO - The amount of sensitivity of a digital camera sensor. A higher ISO enables faster shutter speeds and/or better performance in low light, but is more susceptible to experiencing increased noise.

Noise - Visible effects of interference in an image from a digital camera. Often appearing as random colored dots sprinkled throughout the image or uneven coloration in what should be smoothly-colored areas. It is most likely to show up in the darker or shadowed areas of an image. Noise can be an undesirable effect

that detracts from overall image quality or something you can choose to create artistically.

Opacity – The amount of transparency a layer has.

Pan and Zoom - A useful function that allows users to magnify the captured image in the preview and then, by using the cursor, to move or pan around the image. Typically Pan and Zoom allows users to magnify the image 2x or 4x time. By magnifying the images and zeroing in on a specific section, you can see details not visible when the entire image is sized to fit the preview.

Parameter - A numerical or other measurable factor forming one of a set that defines a system or sets the conditions of its operation.

Photo-editing or Imaging software – Programs in which you can alter your photos and / or create digital images. Depending on the software, you can improve exposure, color and other attributes of your picture, paint on it, add type, apply special effects, remove noise, resize it, combine it with other pictures, prepare it for e-mail or posting on the web, output it to a printer, or do any number of other manipulations or edits.

Plug-in - A computing feature with the ability to be added to a system to give extra features or functions.

Preset - A pre-defined combination of parameters and settings that is saved into a folder within Topaz Detail 2. Topaz provides default presets. A preview of each

preset can be seen in the preset preview window located at the top left hand side of the interface above the preset list.

Preview- Shows the processed preview of the image.

RAW image - An image file format that contains untouched, “raw” pixel information straight from the digital camera’s sensor. It has yet to translate the information in each pixel into the full color information, so this format offers more control over how the final JPEG or TIFF image is generated.

Reduce Blur - An de-blur function that uses deconvolution technology rather than simple sharpening techniques.

Refine – Improve (something) by making small changes to make it more subtle and accurate.

RGB - Red, Green, Blue. The color model that is used in digital cameras and by computer monitors.

Saturation - The difference of intensity within a specific hue.

Shadow - A dark area or shape produced by a body coming between the rays of light and a surface.

Sharpness - The clarity of detail in a photo.

Smoothing - To make a surface more regular or consistent; free from perceptible projections, lumps, or indentations.

“I need a Topaz Detail trial key.”

Visit <http://www.topazlabs.com/downloads> for a trial key. Please check your Spam folder because your Spam filter sometimes filters out the automated email.

If you need more time to evaluate, please e-mail us at www.topazlabs.com/support for an extended trial key.

“I can’t find Topaz Detail in the Photoshop Filters menu.”

If you’re using Windows:

1. Go to C:\Program Files\Topaz Labs\Topaz Detail 2\Plugins. Right click the file “tldetail2.8bf” and click “Copy”.
2. Go to your Photoshop Plug-Ins folder, usually located at C:\Program Files\Adobe\Adobe Photoshop CSx\Plug-Ins. First, delete anything that is currently there that has to do with Topaz Detail 2 This includes any folder that might be labeled “TopazDetail 2” or any tldetail2.8bf file. After doing that, right-click on any empty space and click “Paste”.
3. Quit and restart Photoshop and Topaz Detail will appear in your Filters menu.

If you’re using Mac:

1. Go to /Library/Application Support/Topaz Labs/Detail2/Plugins and right-click Topaz_Detail2.plugin. Click “Copy”.
2. Go to Applications/Adobe Photoshop CSx/Plug-Ins (or wherever your Photoshop Plug-Ins folder is located). Delete any current reference to To-

Frequently Asked Questions

paz Detail 2. Afterwards, right-click any empty spot and paste the Topaz_Detail2.plugin file into the Photoshop Plug-Ins folder.

3. Quit and restart Photoshop and Topaz Detail 2 will appear in your Filters menu.

“Do you have any other Detail tutorials?”

Yes, please see pages 27 and 32 of this Topaz Detail user guide, and also visit: <http://www.topazlabs.com/tutorials/detail>

“I do not have Photoshop, will Detail work with my Elements, Aperture, Lightroom, iPhoto Paint Shop Pro, Photo Impact or Irfanview?”

Yes, you can use Topaz Detail with any of the above host programs. However, to use Detail in Aperture, Lightroom or iPhoto, you will need to download the free Topaz Fusion Express plug-in. For more information please visit: www.topazlabs.com/fusion

“What are the limitations of the trial version of your software?”

The only limit on the trial versions of the Topaz plug-ins is time. The free trial versions are designed to enable you to experience the full functionality of our plug-ins for a 30-day trial period. After the trial period is up, you will only be able to use the Topaz software by purchasing it. You will then receive a license key to activate the plug-in, and the trial version will automatically become the full version with no time limitations.

“If I use the 30-day trial version will I need to uninstall the trial version before I upgrade to a full version?”

No, the Topaz trial software is designed to be unlocked to become the full version simply by entering a license key. The full license key will be e-mailed to you immediately after you purchase the software.

“Where do I enter my key?”

To enter your key please open an image in Photoshop and go to Filter -> Topaz Labs -> Detail 2 -> Menu -> Enter Key. You can then copy & paste or type in your license key and then select OK.

“I had Topaz Detail as a trial, then I purchased. How do I enter my new license key?”

You can enter your new license key by opening up an image in Photoshop and go to Filter -> Topaz Labs -> Detail 2 -> Menu -> Enter Key. Please remove the trial key and enter your new purchased license key, then select OK and you are all set.

“My Topaz Detail key doesn’t work!”

There are a couple of reasons why Topaz Detail might think your upgraded key is invalid.

First, make sure that your key is in the proper format. It’ll be in the format “xxxxxx-xxxxxx-xxxxxx-xxxxxx-xxxxxx” and will be all numbers in 30 digits in five groups of six (no letters).

Second, make sure that as you’re entering the key

Frequently Asked Questions

there is nothing in the space beforehand. This means clicking, pressing Ctrl-A, and hitting delete to make sure that absolutely nothing is in that field before you paste in the key. If it doesn’t work when you copy and paste, try typing it out, and vice versa.

My Topaz filters are grayed out in the filter menu.

Please make sure that you are using a 8-bit or 16-bit image that is in RGB color mode. Also, if your project includes adjustment layers please make sure that you are not on an adjustment layer. You will need to select the image layer. This will allow you to access your Topaz programs.

My Deblur tab sliders are grayed out!

Please make sure that your image preview is zoomed in to 50% or more and this will enable the Deblur sliders.

My image color is not the same as it was in the Detail interface after I process it!

Please make sure that your “Proof Color” feature is turned OFF and this will fix the issue.

I have a question not listed here.

Please visit our knowledge base online at:
<http://www.topazlabs.com/support/kb/>

If you are not able to find the answer there then contact our support specialists online at: www.topazlabs.com/support or e-mail customer support at: help@topazlabs.com

Topaz Detail uses some shortcut keys to speed up your workflow. Many of these keys are similar to those in Photoshop. The following keys work at all times.

MAC Shortcut	PC Shortcut	Action
Spacebar	Spacebar	View Original Image
CMD-ALT-R	CTRL-ALT-R	Reset All
Zoom to Fit	CMD-o	CTRL-o
Zoom to 100%	CMD-ALT-o	CTRL-ALT-o
+ or CMD - +	+ or CTRL - +	Zoom In
- or CMD - -	- or CTRL - -	Zoom Out
CMD - Z	Ctrl - Z	Undo
CMD - Shift - Z	Ctrl - Shift - Z	Redo
D		Expands / Collapses Detail Tab
T		Expands / Collapses Tone Tab
B		Expands / Collapses DeBlur Tab
C		Expands / Collapses Color Tab
S		Takes a Snapshot
CMD-Shift-P	CTRL-Shift-P	Recalls previous Snapshot
CMD-Shift-N	CTRL-Shift-N	Recalls next Snapshot
CMD-1	CTRL-1	View Original Image
CMD-2	CTRL-2	View Adjusted Image
Left or Right Arrow Key		Scrolls through presets
Return (enter) key		Applies selected preset
[key		Reduces selected slider value by 0.1
] key		Increases selected slider value by 0.1
Home Key		Set the slider value to minimum
End Key		Set the slider value to maximum
Double-click slider name		Resets the slider to it's default value

Connect with Topaz



Check out our new **Forum** and our **blog** for tutorials, tips and updates from Topaz Labs!



Follow us on Twitter for notifications of recent news and easily get in touch with us whenever you feel like it!



Find us on our Facebook page and network with other Topaz users!



Participate in the entirely user-led Topaz Flickr group for a helpful and highly active community for Topaz Photoshop plug-ins!



Subscribe to our YouTube channel to keep up with any newly released product video tutorials!

Contact Information

Topaz Labs LLC

5001 Spring Valley Road
Suite 400 East
Dallas, TX 75244

Technical Support

Visit: <http://topazlabs.com/support/>
Email: help@topazlabs.com

For more information

info@topazlabs.com

Topaz Labs LLC, a privately owned company in Dallas, Texas, focuses on developing advanced video and image enhancement technology. With today's widespread use of digital still cameras, digital video cameras, and HDTV, the need for high-quality digital images and videos has greatly increased. Topaz Labs' mission is to bring practical state-of-the-art image and video enhancement technology to both professionals and consumers.

Be sure to check out the complete line up of Topaz products.

Image Plug-ins



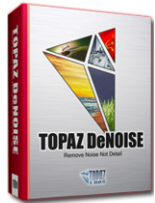
Ultimate control over image exposure, detail, and color gives you the power to make your photos pop.



Advanced JPEG artifact reduction filters eliminate JPEG compression artifacts while preserving image detail like never before.



3 levels of intricate and specific detail enhancement for naturally enhanced images with no halos.



Advanced noise reduction filters noise while maximizing and retaining image detail simply and effortlessly.



Specializes in overall image improvement. Features sharpening, re-constructing, enlarging, high-quality noise removal and JPEG artifact damage tools.



Remove unwanted backgrounds from your digital images quickly and easily with the new Topaz ReMask.



Takes any of your regular photos and effortlessly turn them into beautiful works of art.



Specializes in creating crisp and stylized images. Also features extensive smoothing capabilities.



Bring the power of Topaz to your Aperture, iPhoto and Lightroom workflow with the new Fusion Express plug-in.

Video Plug-ins



Increase video quality with this suite of video enhancement filters utilizing super-resolution technology.



Easily and efficiently capture video frames and significantly increase their quality and resolution with this stand-alone Windows application.

Go to <http://www.topazlabs.com/downloads> to get your 30-day free trial!